

LOC RWY 5

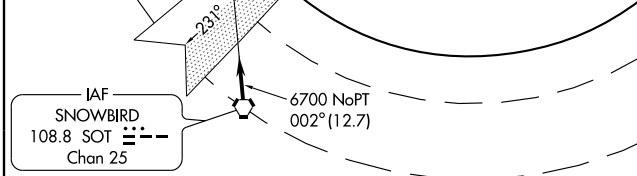
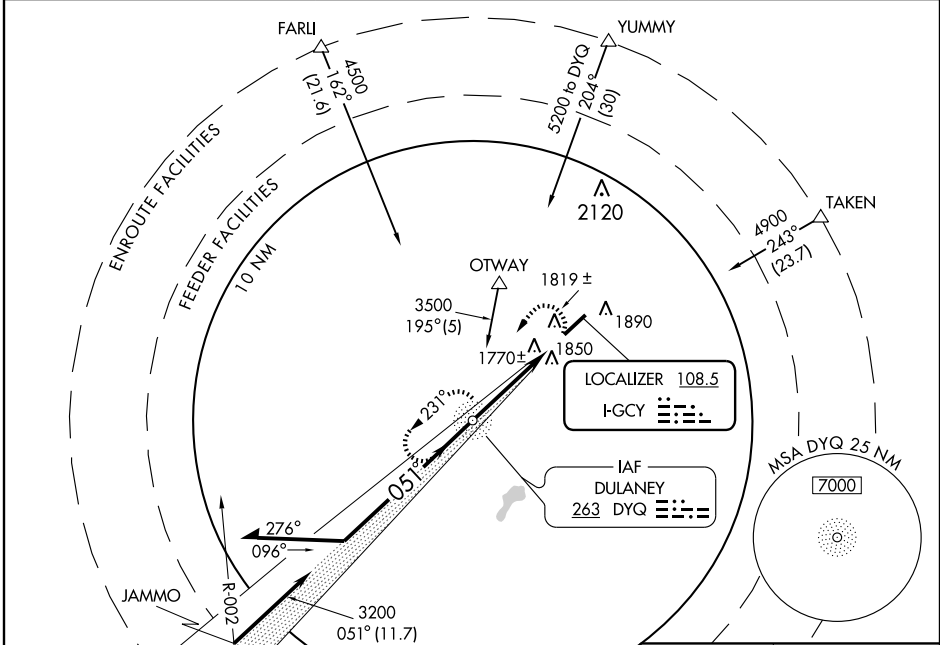
GREENEVILLE-GREENE COUNTY MUNI (GCY)

LOC I-GCY	APP CRS	Rwy Idg	6302
108.5	051°	TDZE	1604
		Apt Elev	1608

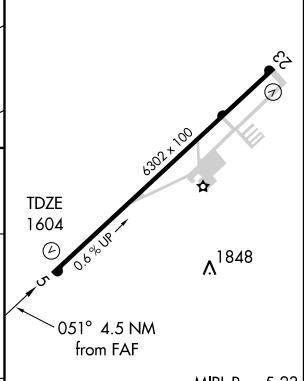
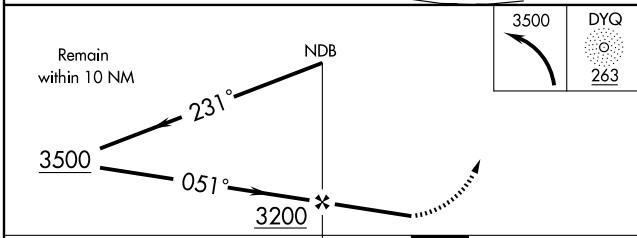
NA If local altimeter not received use Tri-Cities Rgnl altimeter setting and increase all MDAs 120 feet. **ADF REQUIRED**

MISSED APPROACH: Climbing left turn to 3500 direct DYQ NDB and hold.

AWOS-3 128.425	TRI-CITY APP CON★ 119.25 317.5	UNICOM 122.7 (CTAF)
--------------------------	--	-------------------------------



ELEV 1608



CATEGORY	A	B	C	D	FAF to MAP 4.5 NM					
S-5	2020-1	416 (500-1)	2020-1¼	416 (500-1¼)	Knots	60	90	120	150	180
CIRCLING	2260-1	652 (700-1)	2260-1¾	652 (700-1¾)	Min:Sec	4:30	3:00	2:15	1:48	1:30

LOC RWY 5

SE-1, 22 OCT 2009 to 19 NOV 2009

SE-1, 22 OCT 2009 to 19 NOV 2009