

CLINTON, OKLAHOMA

AL-5833 (FAA)

VORTAC BFV <b>110.0</b> Chan <b>37</b>	APP CRS <b>029°</b>	Rwy Idg TDZE Apt Elev <b>1615</b>	<b>N/A</b> <b>N/A</b> <b>1615</b>
--	------------------------	--	---

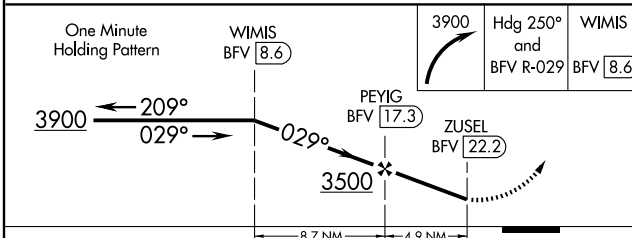
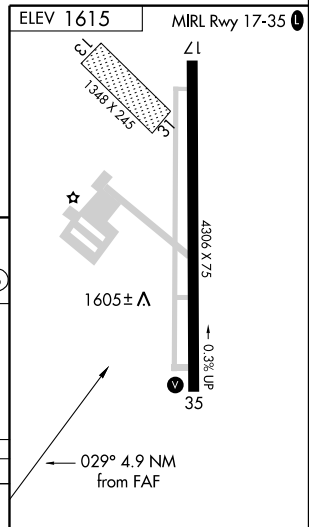
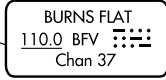
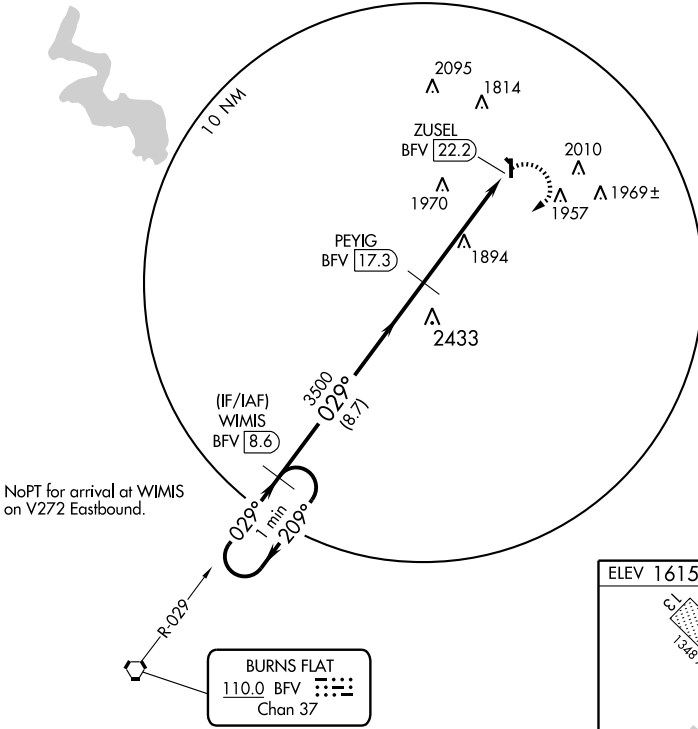
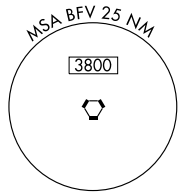
**VOR/DME-A**  
CLINTON RGNL (CLK)

**⚠** If local altimeter setting not received, use Hobart Rgnl altimeter setting and increase all MDAs 100 feet. **MISSED APPROACH:** Climbing right turn to 3900 via heading 250° and BFV R-029 to WIMIS/BFV 8.6 DME and hold.

AWOS-3 <b>119.225</b>	FORT WORTH CENTER <b>128.4 269.375</b>	UNICOM <b>122.8 (CTAF) 0</b>
--------------------------	---	---------------------------------

SC-1, 22 OCT 2009 to 19 NOV 2009

SC-1, 22 OCT 2009 to 19 NOV 2009



CATEGORY	A	B	C	D
CIRCLING	2280-1 665 (700-1)	2280-1¼ 665 (700-1¼)	2280-1¾ 665 (700-1¾)	NA

CLINTON, OKLAHOMA  
Orig 09127

35° 32' N-98° 56' W

CLINTON RGNL (CLK)  
**VOR/DME-A**