

RNAV (GPS) RWY 35

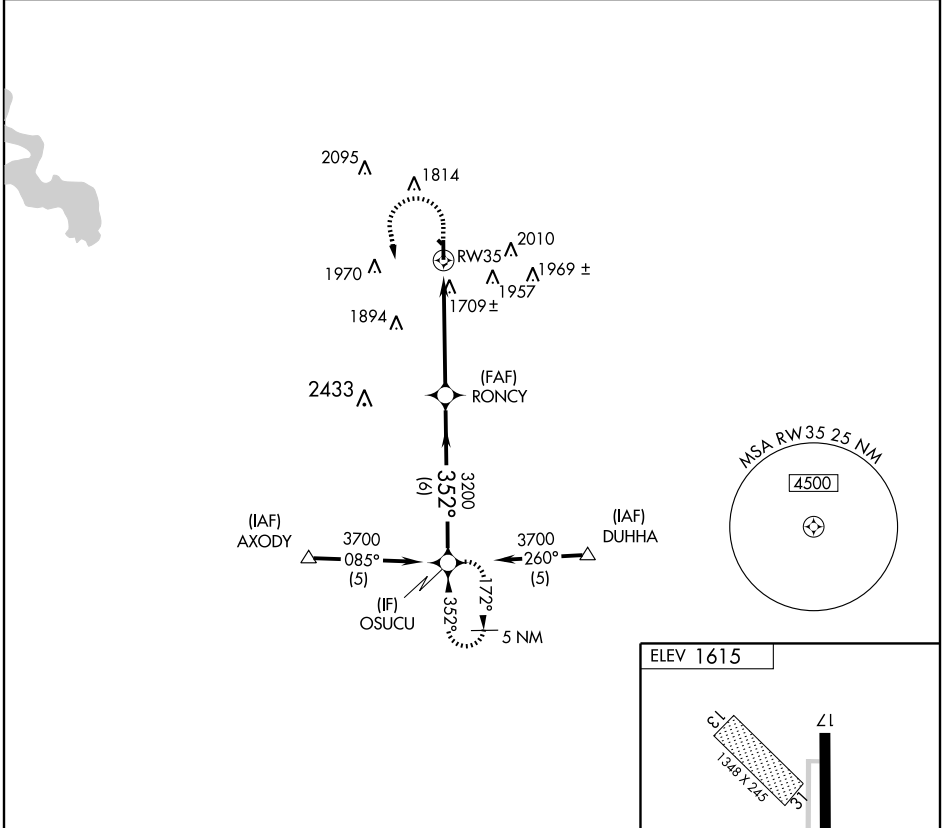
CLINTON RGNL (CLK)

APP CRS 352°	Rwy Idg 4306
	TDZE 1615
	Apt Elev 1615

⚠ DME/DME RNP-0.3 NA. If local altimeter setting not received, use Hobart altimeter setting and increase all MDAs 100 feet. VDP NA with Hobart altimeter setting.

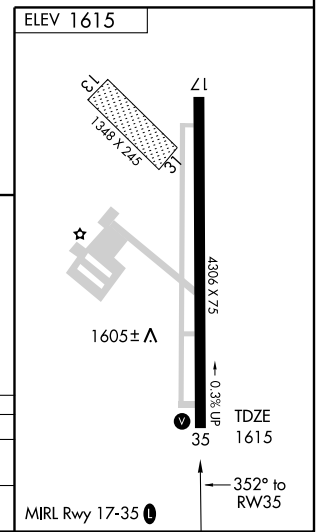
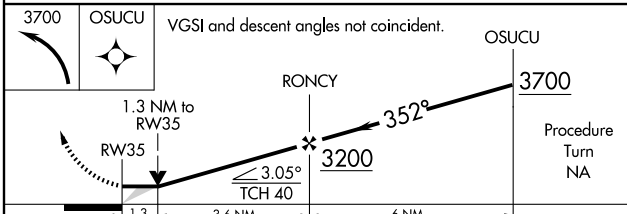
MISSED APPROACH: Climbing left turn to 3700 direct OSUCU and hold.

AWOS-3 119.225	FORT WORTH CENTER 128.4 269.375	UNICOM 122.8 (CTAF) 0
--------------------------	---	---------------------------------



SC-1, 22 OCT 2009 to 19 NOV 2009

SC-1, 22 OCT 2009 to 19 NOV 2009



CATEGORY	A	B	C	D
LNNAV MDA	2020-1 405 (500-1)		2020-1¼ 405 (500-1¼)	NA
CIRCLING	2140-1 525 (600-1)		2240-1¾ 625 (700-1¾)	NA