

RNAV (GPS) RWY 17

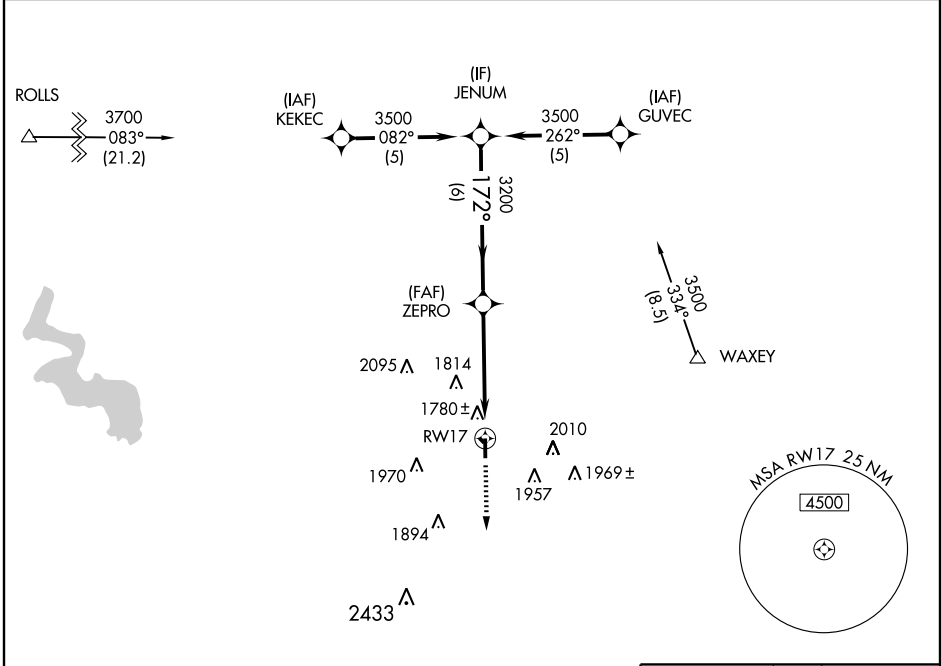
CLINTON RGNL (CLK)

APP CRS 172°	Rwy Idg 4306
	TDZE 1604
	Apt Elev 1615

▽ DME/DME RNP-0.3 NA. If local altimeter setting not received, use Hobart altimeter setting and increase all MDAs 100 feet.
▲ VDP NA with Hobart altimeter setting.

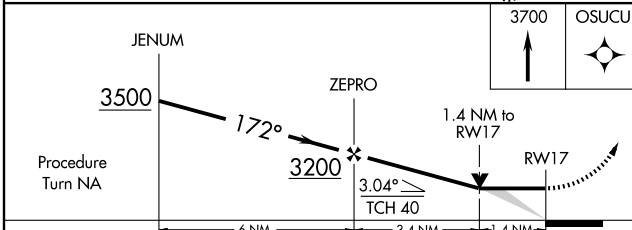
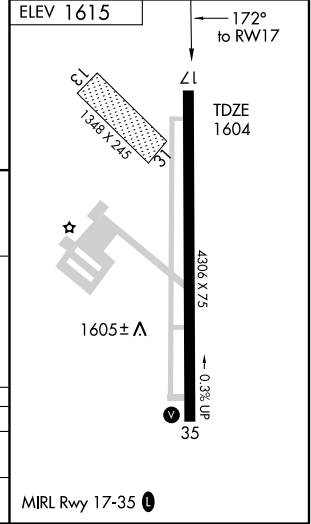
MISSED APPROACH: Climb to 3700 direct OSUCU and hold.

AWOS-3 119.225	FORT WORTH CENTER 128.4 269.375	UNICOM 122.8 (CTAF) 0
--------------------------	---	---------------------------------



SC-1, 22 OCT 2009 to 19 NOV 2009

SC-1, 22 OCT 2009 to 19 NOV 2009



CATEGORY	A	B	C	D
LNVA MDA	2080-1	476 (500-1)	2080-1¼ 476 (500-1¼)	NA
CIRCLING	2140-1	525 (600-1)	2240-1¾ 625 (700-1¾)	NA

MIRL Rwy 17-35 0