

NEVADA, MISSOURI

AL-5831 (FAA)

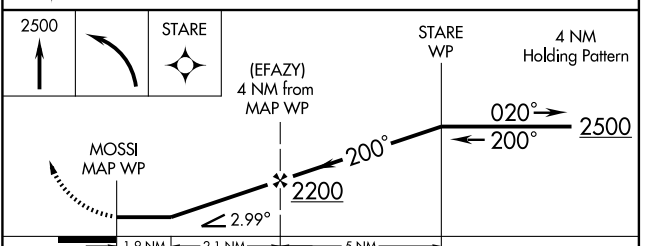
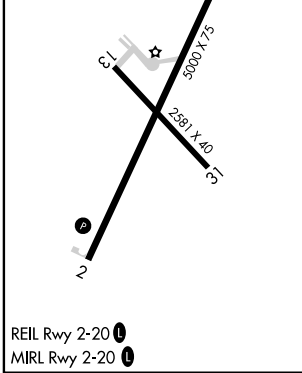
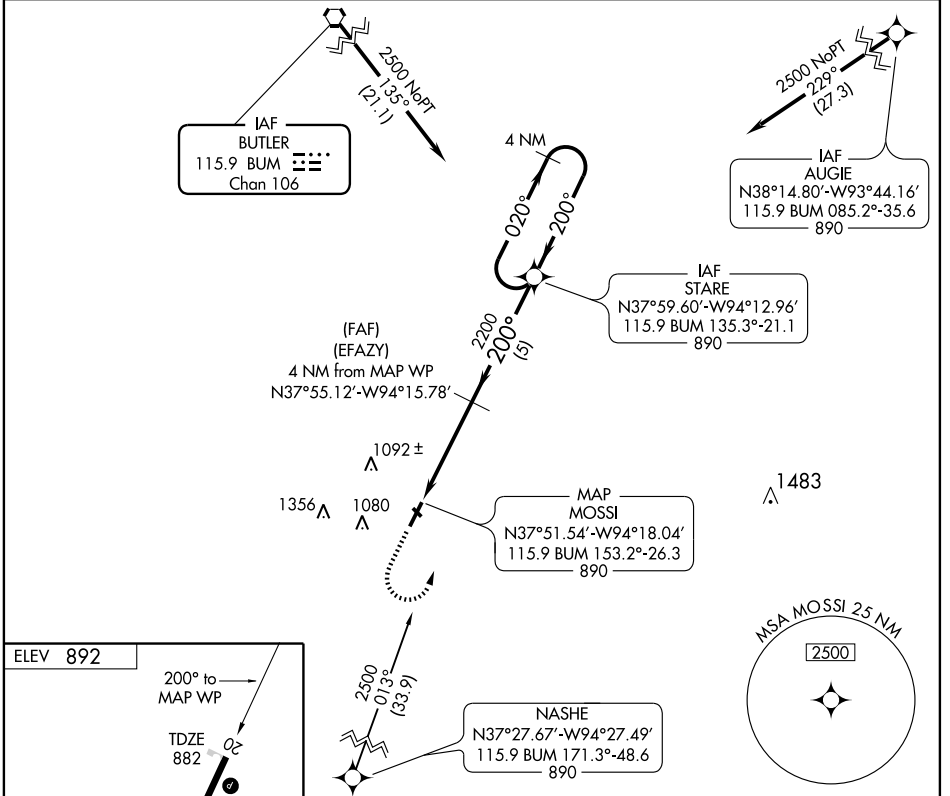
VORTAC BUM 115.9 Chan 106	APP CRS 200°	Rwy Idg TDZE Apt Elev	5000 882 892
---	------------------------	-----------------------------	---

VOR/DME RNAV or GPS RWY 20

NEVADA MUNI (NVD)

NA	Use Joplin Regional altimeter setting.	MISSED APPROACH: Climb to 2500 then left turn direct STARE WP and hold.
-----------	--	---

AWOS-3 119.175	KANSAS CITY CENTER 125.55 327.0	UNICOM 122.8 (CTAF) 0
--------------------------	---	--



CATEGORY	A	B	C	D
S-20	1540-1 658 (700-1)	1540-1¼ 658 (700-1¼)	1540-1¾ 658 (700-1¾)	1540-2 658 (700-2)
CIRCLING	1540-1 648 (700-1)	1540-1¼ 648 (700-1¼)	1580-2 688 (700-2)	1580-2¼ 688 (700-2¼)

NEVADA, MISSOURI
Amdt 1 09071

37°51'N-94°18'W

NEVADA MUNI (NVD)

VOR/DME RNAV or GPS RWY 20

NC-3, 22 OCT 2009 to 19 NOV 2009

NC-3, 22 OCT 2009 to 19 NOV 2009