

NEVADA, MISSOURI

AL-5831 (FAA)

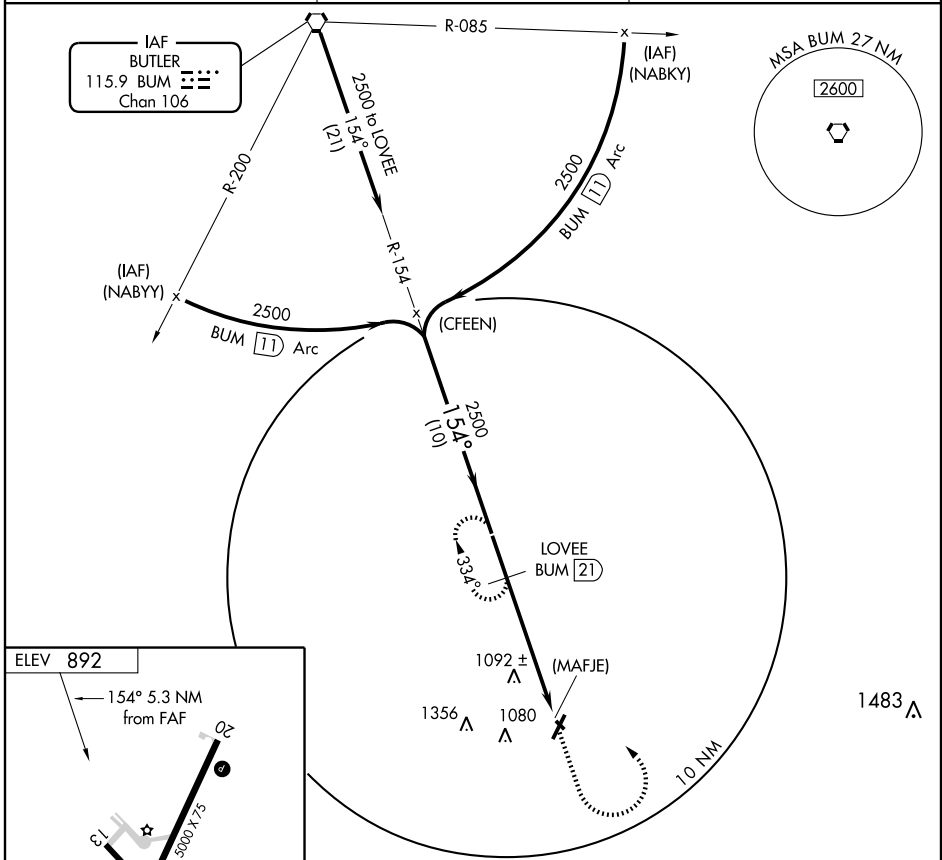
VORTAC BUM 115.9 Chan 106	APP CRS 154°	Rwy Idg TDZE Apt Elev	N/A N/A 892
---	------------------------	-----------------------------	--

VOR/DME or GPS-A

NEVADA MUNI (NVD)

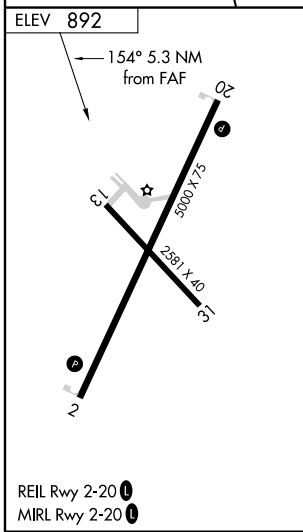
NA Use Joplin Regional altimeter setting. MISSED APPROACH: Climb to 2500 then left turn via BUM VORTAC R-154 to LOVEE 21 DME and hold.

AWOS-3 119.175	KANSAS CITY CENTER 125.55 327.0	UNICOM 122.8 (CTAF) 0
--------------------------	---	--



NC-3, 22 OCT 2009 to 19 NOV 2009

NC-3, 22 OCT 2009 to 19 NOV 2009



VORTAC	LOVEE BUM 21	2500	LOVEE BUM 21	
Procedure Turn NA	2500	154°	2500	
	21 NM		5.3 NM	
CATEGORY	A	B	C	D
CIRCLING	1560-1 668 (700-1)	1560-1¼ 668 (700-1¼)	1580-2 688 (700-2)	1580-2¼ 688 (700-2¼)

NEVADA, MISSOURI
Amdt 1 09071

37°51'N-94°18'W

VOR/DME or GPS-A

NEVADA MUNI (NVD)