

# RNAV (GPS) RWY 30

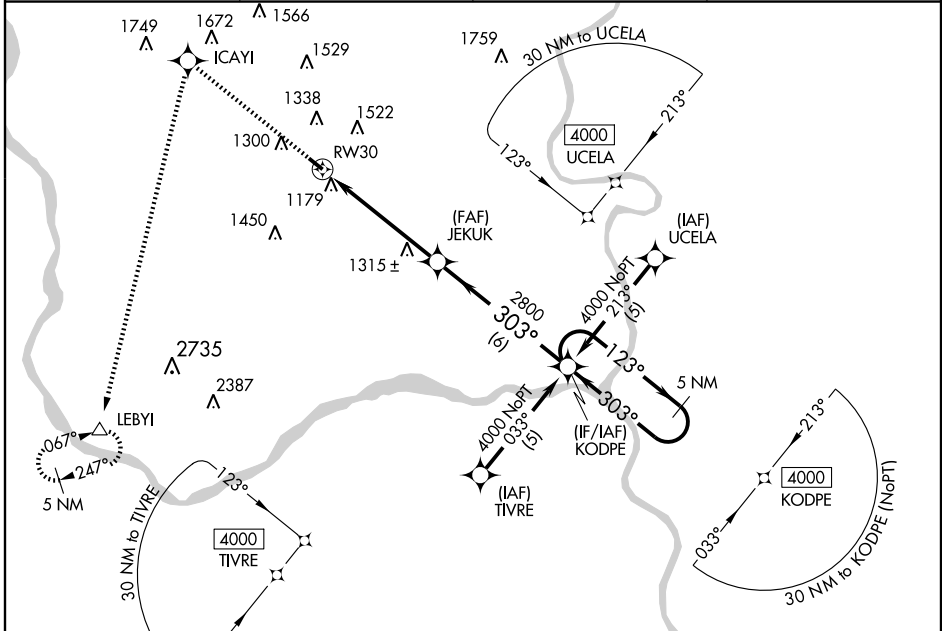
OMAHA/MILLARD (MLE)

APP CRS <b>303°</b>	Rwy Idg <b>3801</b>
	TDZE <b>1050</b>
	Apt Elev <b>1051</b>

**▼** DME/DME RNP-0.3 NA. If local altimeter setting not received, use Council Bluffs Muni altimeter setting and increase all MDAs 80 feet. Visibility reduction by helicopters NA.

**▲** MISSED APPROACH: Climb to 4000 direct ICAY1 and left turn via 187° track to LEBY1 and hold.

AWOS-3 <b>118.25</b>	OMAHA APP CON <b>120.1 354.05</b>	CLNC DEL <b>125.4</b>	UNICOM <b>123.0 (CTAF) ①</b>
-------------------------	--------------------------------------	--------------------------	---------------------------------



NC-2, 22 OCT 2009 to 19 NOV 2009

NC-2, 22 OCT 2009 to 19 NOV 2009

4000	ICAY1	LEBY1	5 NM Holding Pattern	
↑	✦	△		
	TRK 187°			
JEKUK			KODPE	
RW30			4000	
3.05° TCH 39			123°	
5.3 NM			303°	
6 NM			303°	
CATEGORY	A	B	C	D
RNAV MDA	1620-1	570 (600-1)	1620-1½ 570 (600-1½)	NA
CIRCLING	1700-1	649 (700-1)	1760-2 709 (800-2)	NA

