

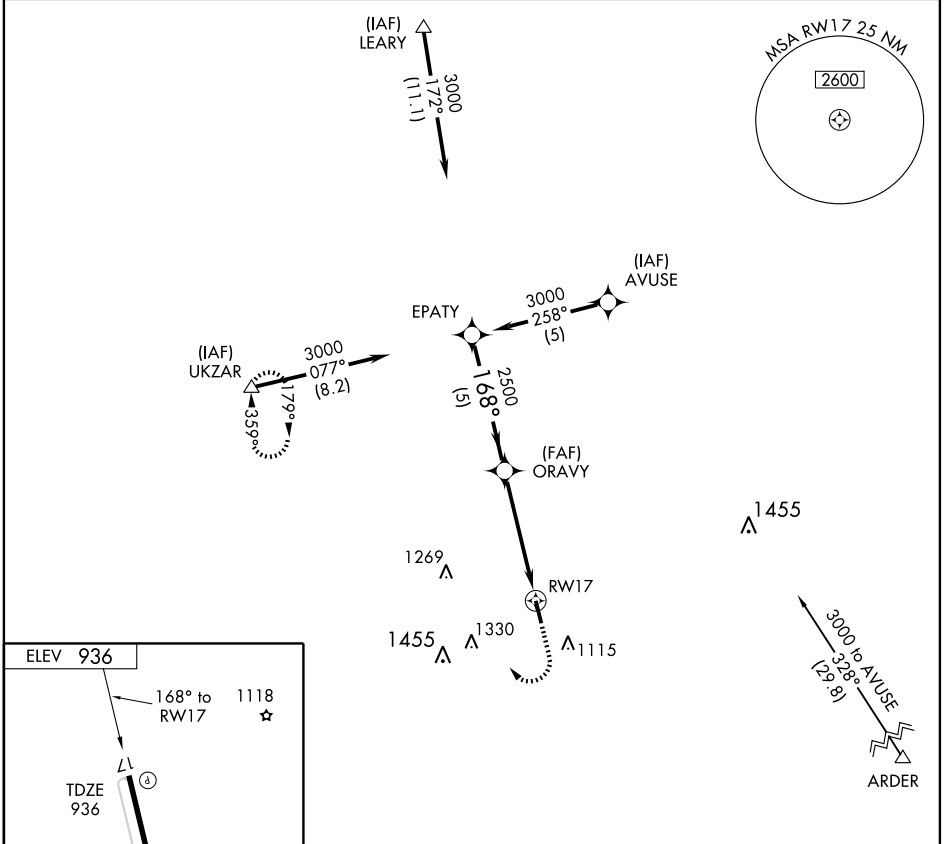
# GPS RWY 17

LAWRENCEBURG-LAWRENCE COUNTY (2M2)

APP CRS	Rwy Idg	<b>5003</b>
<b>168°</b>	TDZE	<b>936</b>
	Apt Elev	<b>936</b>

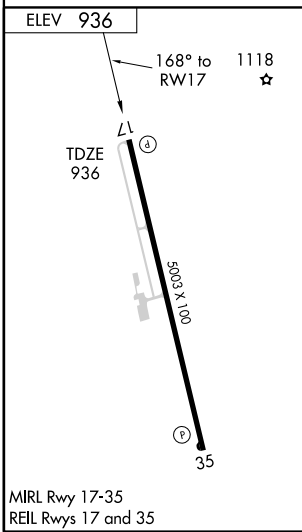
<p>▼ ▲ NA</p>		<p>MISSED APPROACH: Climb to 2000 then climbing right turn to 3000 direct UKZAR WP and hold.</p>	
-------------------	--	--	--

AWOS-3 <b>120.175</b>	MEMPHIS CENTER <b>125.85 381.4</b>	GCO <b>121.725</b>	UNICOM <b>122.8</b> (CTAF)
--------------------------	---------------------------------------	-----------------------	-------------------------------



SE-1, 22 OCT 2009 to 19 NOV 2009

SE-1, 22 OCT 2009 to 19 NOV 2009



	2000	3000	UKZAR
	↑	↷	△
Procedure Turn NA			
CATEGORY	A	B	C
S-17	1380-1	444 (500-1)	NA
CIRCLING	1420-1	484 (500-1)	NA