

RNAV (GPS) RWY 36

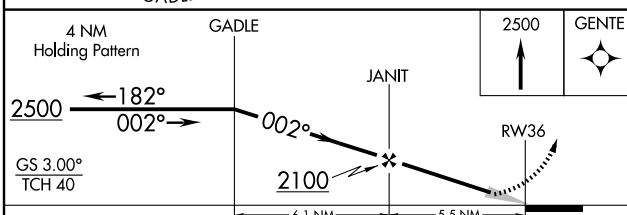
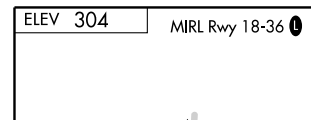
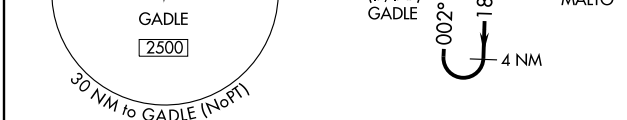
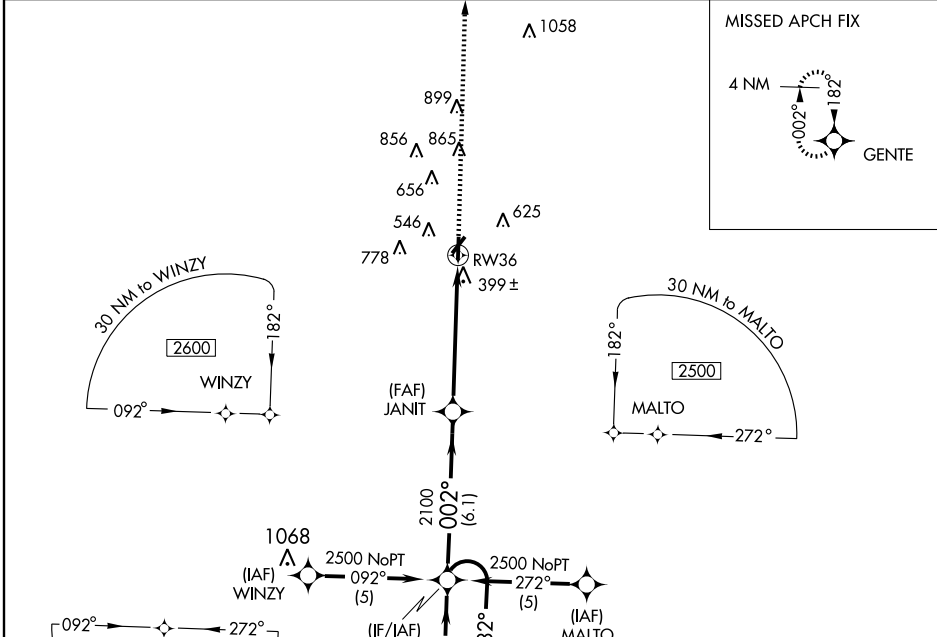
DEXTER MUNI (DXE)

WAAS Ch 50507 W36A	APP CRS 002°	Rwy Idg TDZE Apt Elev	5000 298 304
--	------------------------	-----------------------------	---

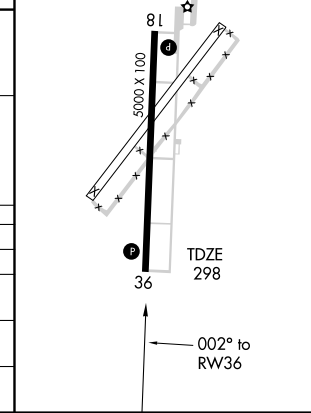
NA Baro-VNAV NA, DME/DME RNP-0.3 NA.
Use Poplar Bluff altimeter setting, when not recieved use Cape Girardeau Rgnl altimeter setting and increase all DA 33 feet and LPV visibilities ¼ mile all Cats, increase all MDA 40 feet and LNAV and Circling Cats C/D visibility ¼ mile.

MISSED APPROACH: Climb to 2500 direct GENTE and hold.

POPLAR BLUFF ASOS 124.225	MEMPHIS CENTER 133.65 292.15	UNICOM 122.8 (CTAF)
-------------------------------------	--	-------------------------------



CATEGORY	A	B	C	D
LPV DA		595-1	297 (300-1)	
LNAV/VNAV DA		795-1¾	497 (500-1¾)	
LNAV MDA	880-1	582 (600-1)	880-1½ 582 (600-1½)	880-1¾ 582 (600-1¾)
CIRCLING	960-1	656 (700-1)	1040-2 736 (800-2)	1180-2¾ 876 (900-2¾)



NC-3, 22 OCT 2009 to 19 NOV 2009

NC-3, 22 OCT 2009 to 19 NOV 2009