

# RNAV (GPS) RWY 9

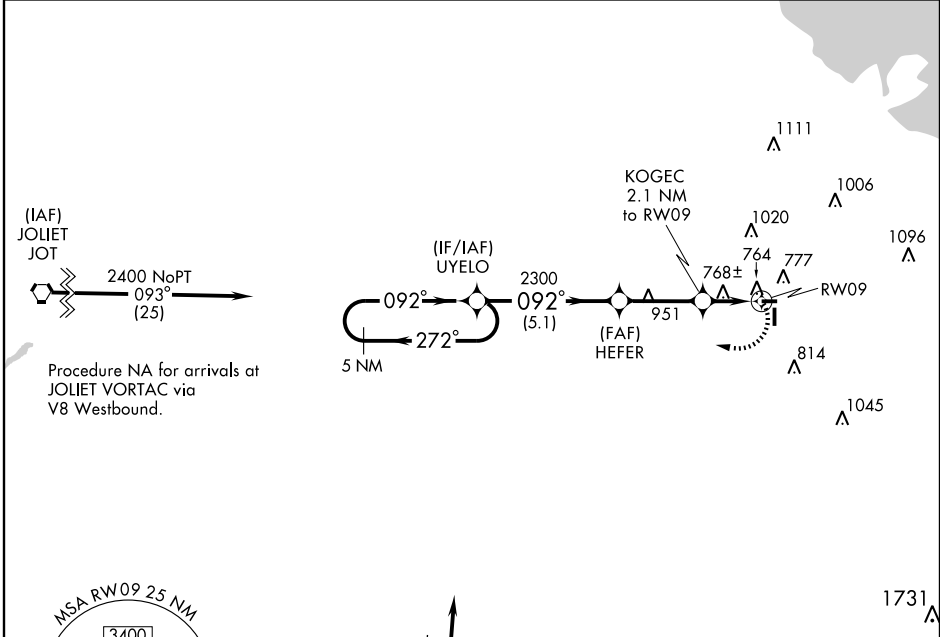
CHICAGO/LANSING MUNI (IGQ)

APP CRS	Rwy Idg	<b>3395</b>
<b>092°</b>	TDZE	<b>617</b>
	Apt Elev	<b>620</b>

**⚠** If local altimeter setting not received, use Chicago Midway Intl altimeter setting and increase all MDAs 60 feet.  
**⚠** Visibility reduction by helicopters NA. DME/DME RNP-0.3 NA.

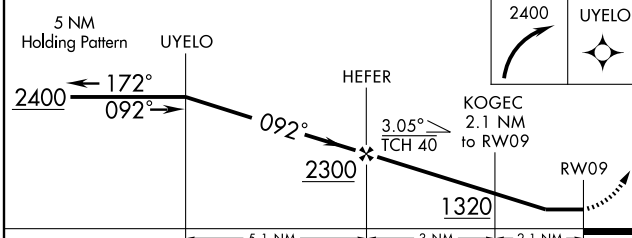
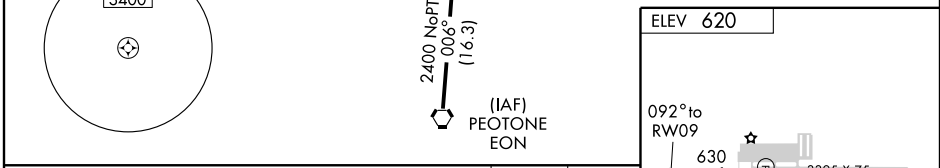
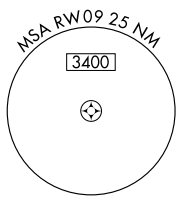
**MISSED APPROACH:** Climbing right turn to 2400 direct UYELO and hold.

AWOS-3 <b>119.275</b>	CHICAGO APP CON <b>118.4 285.6</b>	UNICOM <b>122.7 (CTAF) 0</b>
--------------------------	---------------------------------------	---------------------------------



EC-3, 22 OCT 2009 to 19 NOV 2009

EC-3, 22 OCT 2009 to 19 NOV 2009



CATEGORY	A	B	C	D
RNAV MDA	1020-1	403 (400-1)		NA
CIRCLING	1140-1	520 (600-1)		NA

ELEV 620

092° to RWY 09

630

3395 X 75

27

TDZE 617

81

4002 X 75

36

REIL Rwy 9, 18, 27, and 36

MRL Rwy 9-27 and 18-36