

RNAV (GPS) RWY 36

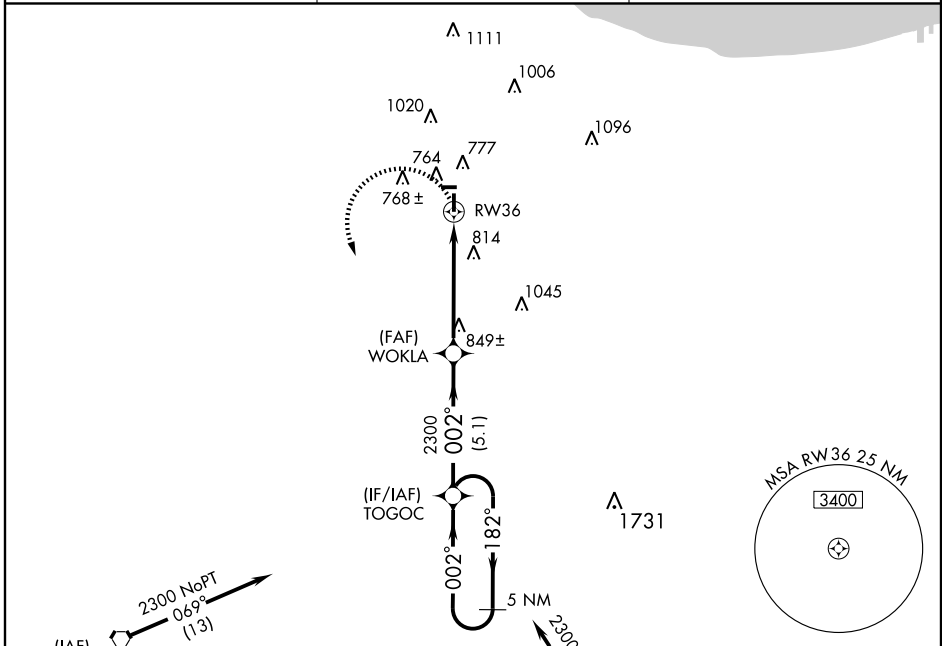
CHICAGO/LANSING MUNI (IGQ)

| | | |
|-------------|----------|-------------|
| APP CRS | Rwy Idg | 4002 |
| 002° | TDZE | 620 |
| | Apt Elev | 620 |

⚠ If local altimeter setting not received, use Chicago Midway Intl altimeter setting and increase all MDAs 60 feet. DME/DME RNP-0.3 NA. VDP NA when using Chicago Midway Intl altimeter setting.

⚠ MISSED APPROACH: Climbing left turn to 2300 direct TOGOC and hold.

| | | |
|--------------------------|---------------------------------------|---------------------------------|
| AWOS-3 119.275 | CHICAGO APP CON 118.4 285.6 | UNICOM 122.7 (CTAF) 0 |
|--------------------------|---------------------------------------|---------------------------------|

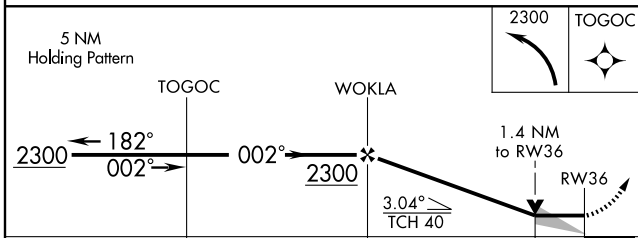


EC-3, 22 OCT 2009 to 19 NOV 2009

EC-3, 22 OCT 2009 to 19 NOV 2009



Procedure NA for arrivals at LUCIT on V7-51-97 SE Bnd.



| CATEGORY | A | B | C | D |
|-----------|--------|-------------|---|----|
| LNNAV MDA | 1100-1 | 480 (500-1) | | NA |
| CIRCLING | 1140-1 | 520 (600-1) | | NA |

