

RNAV (GPS) RWY 27

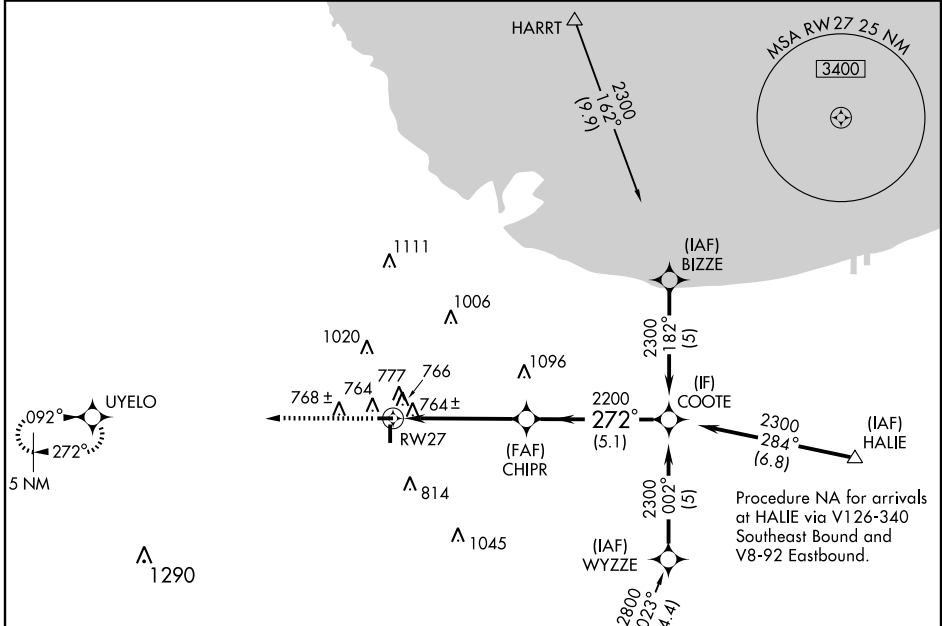
CHICAGO/LANSING MUNI (IGQ)

WAAS CH 61303 W27A	APP CRS 272°	Rwy Idg TDZE 617 Apt Elev 620	3395
--	------------------------	---	-------------

If local altimeter setting not received, use Chicago Midway Intl altimeter setting and increase all DAs 42 feet and all MDAs 60 feet. Baro-VNAV NA when using Chicago Midway Intl altimeter setting. VDP NA when using Chicago Midway Intl altimeter setting. DME/DME RNP-0.3 NA. For uncompensated Baro-VNAV systems, LNAV/VNAV NA below -16° C (4° F) or above 54° C (130° F). Visibility reduction by helicopters NA.

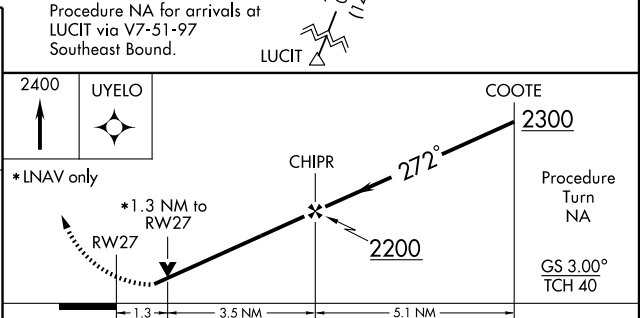
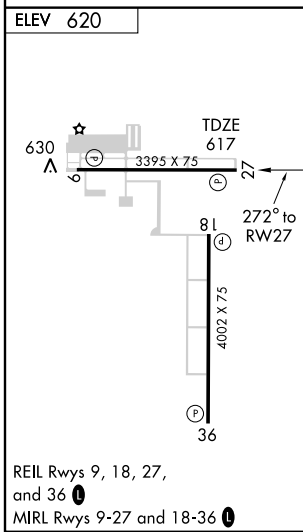
MISSED APPROACH:
Climb to 2400 direct
UYELO and hold.

AWOS-3 119.275	CHICAGO APP CON 118.4 285.6	UNICOM 122.7 (CTAF) 0
--------------------------	---------------------------------------	---------------------------------



EC-3, 22 OCT 2009 to 19 NOV 2009

EC-3, 22 OCT 2009 to 19 NOV 2009



CATEGORY	A	B	C	D
LPV DA	1016-1½	399 (400-1½)		NA
LNAV/VNAV DA	1072-1¾	455 (500-1¾)		NA
LNAV MDA	1080-1	463 (500-1)		NA
CIRCLING	1140-1	520 (600-1)		NA