

CELINA, OHIO

AL-5823 (FAA)

# NDB or GPS RWY 8

CELINA/LAKEFIELD (CQA)

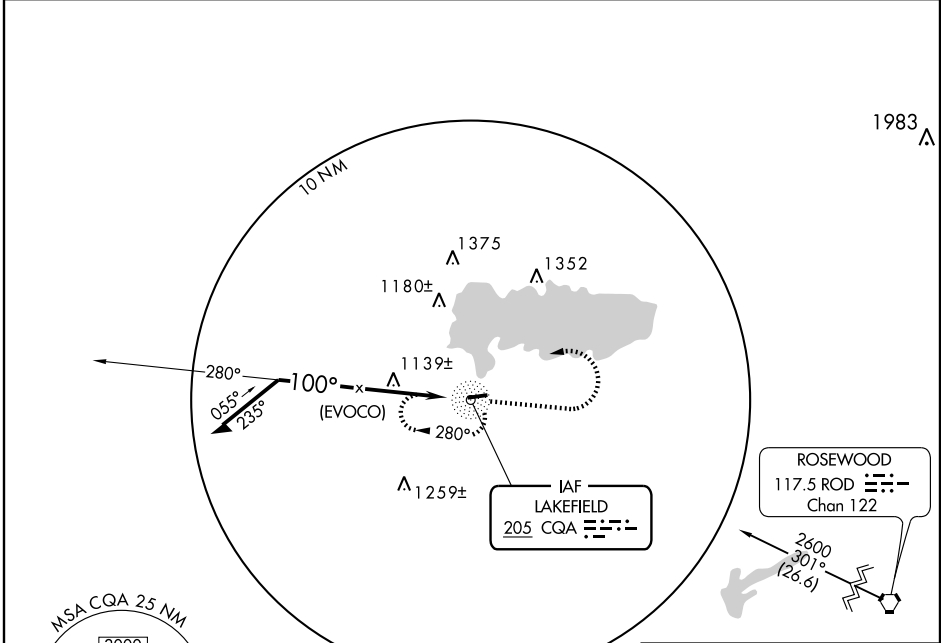
NDB CQA <b>205</b>	APP CRS <b>100°</b>	Rwy Idg TDZE Apt Elev	<b>4400</b> <b>892</b> <b>892</b>
-----------------------	------------------------	-----------------------------	-----------------------------------------

**▽** Use Dayton Intl altimeter setting.

**△** NA

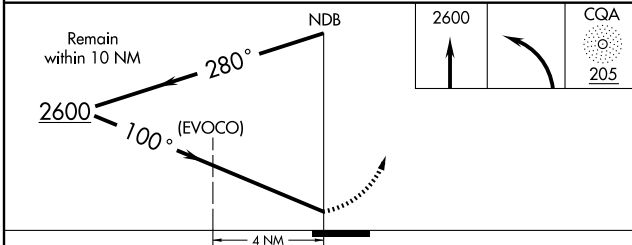
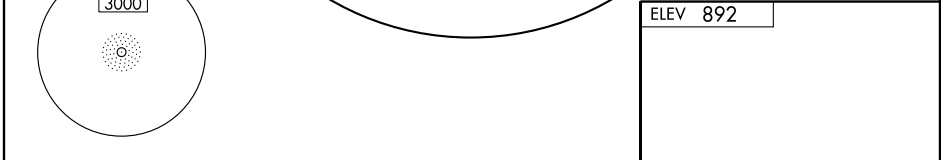
MISSED APPROACH: Climb to 2600 then left turn direct CQA NDB and hold.

DAYTON APP CON <b>134.45 352.05</b>	UNICOM <b>122.8 (CTAF)</b>	<b>123.30</b>
----------------------------------------	-------------------------------	---------------



EC-2, 22 OCT 2009 to 19 NOV 2009

EC-2, 22 OCT 2009 to 19 NOV 2009



CATEGORY	A	B	C	D
S-8	1600-1	708 (800-1)	1600-2 708 (800-2)	NA
CIRCLING	1600-1	708 (800-1)	1600-2 708 (800-2)	NA

REIL Rws 8 and 26 **①**

MIRL Rwy 8-26 **①**

CELINA, OHIO  
Amdt 4 09295

40°29'N-84°33'W

# CELINA/LAKEFIELD (CQA)

## NDB or GPS RWY 8