

SPARTA, ILLINOIS

AL-5821 (FAA)

RNAV (GPS) RWY 18

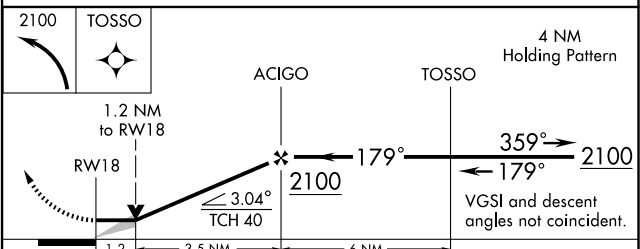
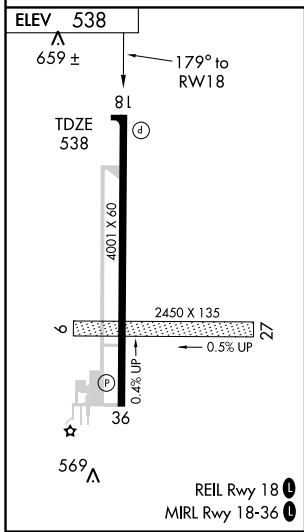
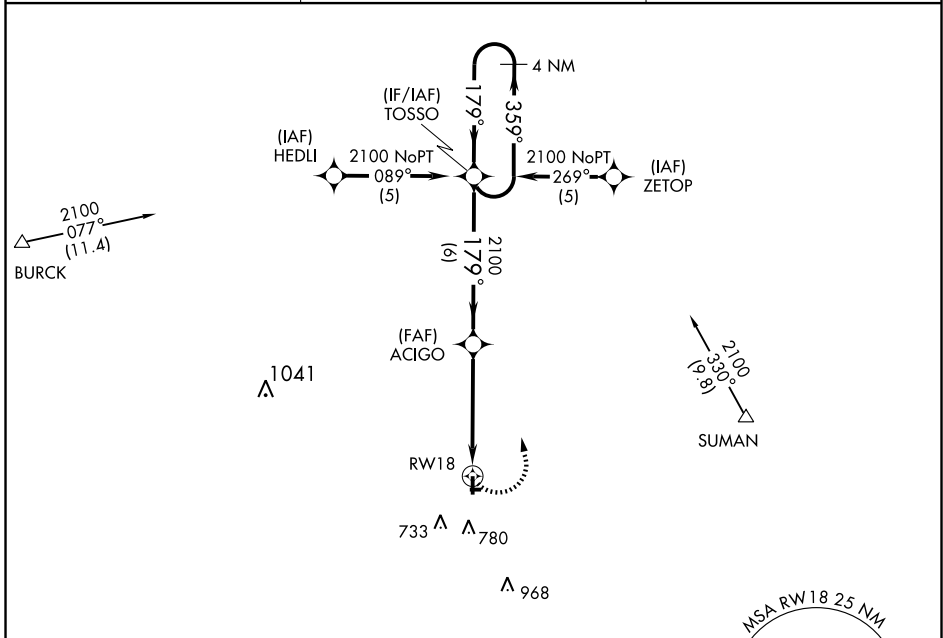
SPARTA COMMUNITY-HUNTER FIELD (S.A.R.)

APP CRS	Rwy Idg	4001
179°	TDZE	538
	Apt Elev	538

▼ If local altimeter not received, use Scott AFB/Midamerica altimeter setting and increase all MDAs 80 feet.
▲ NA VDP NA with Scott AFB/Midamerica altimeter setting. GPS or RNP-0.3 Required. DME/DME RNP-0.3 NA.

MISSED APPROACH: Climbing left turn to 2100 direct TOSSO WP and hold.

AWOS-3 118.375	ST. LOUIS APP CON 125.2 281.5	UNICOM 123.075 (CTAF) 0
--------------------------	---	-----------------------------------



CATEGORY	A	B	C	D
LNAV MDA	940-1	402 (500-1)	940-1¼	402 (500-1¼)
CIRCLING	960-1 422 (500-1)	1100-1 562 (600-1)	1100-1½ 562 (600-1½)	1100-2 562 (600-2)

SPARTA, ILLINOIS
 Orig 08157

38°09'N - 89°42'W

RNAV (GPS) RWY 18

EC-3, 22 OCT 2009 to 19 NOV 2009

EC-3, 22 OCT 2009 to 19 NOV 2009