

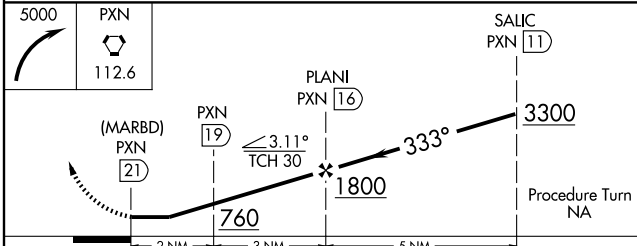
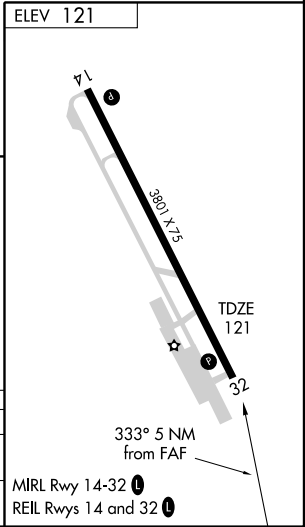
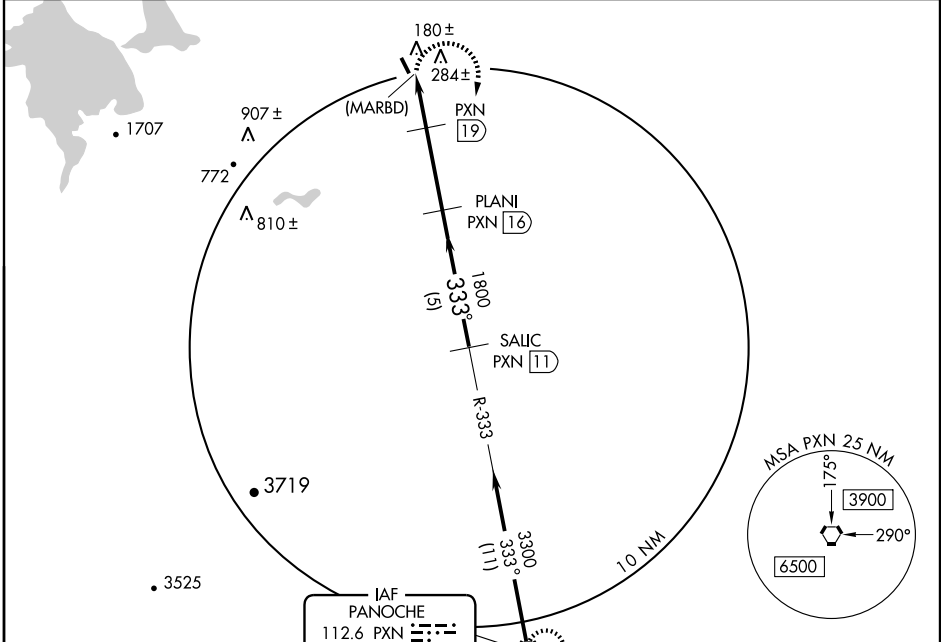
VOR/DME or GPS RWY 32

LOS BANOS MUNI (LSN)

VORTAC PXN 112.6 Chan 73	APP CRS 333°	Rwy Idg 3801 TDZE 121 Apt Elev 121
--	------------------------	---

NA When local altimeter setting not received, use Merced altimeter setting. MISSED APPROACH: Climbing right turn to 5000 direct PXN VORTAC and hold.

AWOS-3 118.675	NORCAL APP CON 120.95 269.45	UNICOM 122.8 (CTAF)
--------------------------	--	-------------------------------



CATEGORY	A	B	C	D
S-32	620-1 499 (500-1)	620-1¼ 499 (500-1¼)	620-1½ 499 (500-1½)	NA
CIRCLING	680-1 559 (600-1)	680-1¼ 559 (600-1¼)	680-1½ 559 (600-1½)	NA

SW-2, 22 OCT 2009 to 19 NOV 2009

SW-2, 22 OCT 2009 to 19 NOV 2009