

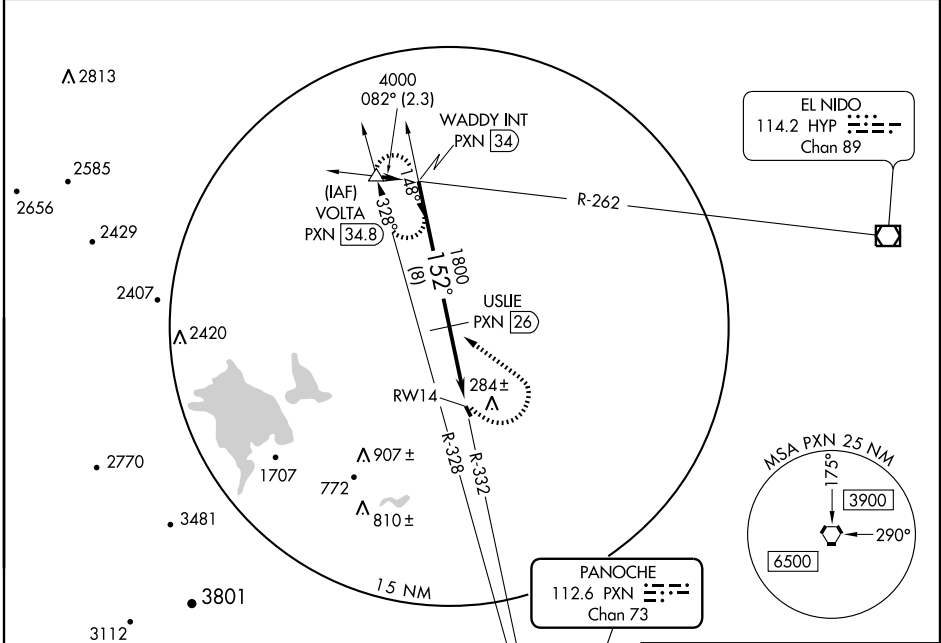
# VOR/DME or GPS RWY 14

LOS BANOS MUNI (LSN)

VORTAC PXN <b>112.6</b> Chan <b>73</b>	APP CRS <b>152°</b>	Rwy Idg TDZE <b>121</b> Apt Elev <b>121</b>	<b>3801</b>
----------------------------------------------	------------------------	---------------------------------------------------	-------------

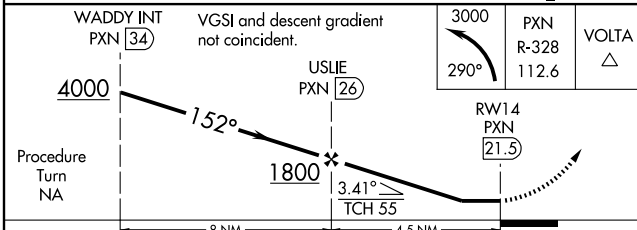
**NA** When local altimeter setting not received, use Merced altimeter setting. **MISSED APPROACH:** Climbing left turn to 3000 via heading 290° and PXN R-328 to VOLTA INT/34.8 DME and hold.

AWOS-3 <b>118.675</b>	NORCAL APP CON <b>120.95 269.45</b>	UNICOM <b>122.8</b> (CTAF) <b>0</b>
--------------------------	----------------------------------------	----------------------------------------



SW-2, 22 OCT 2009 to 19 NOV 2009

SW-2, 22 OCT 2009 to 19 NOV 2009



CATEGORY	A	B	C	D
S-14	680-1 559 (600-1)	680-1¼ 559 (600-1¼)		NA
CIRCLING	680-1 559 (600-1)	680-1¼ 559 (600-1¼)		NA

