

GLASGOW, KENTUCKY

AL-5818 (FAA)

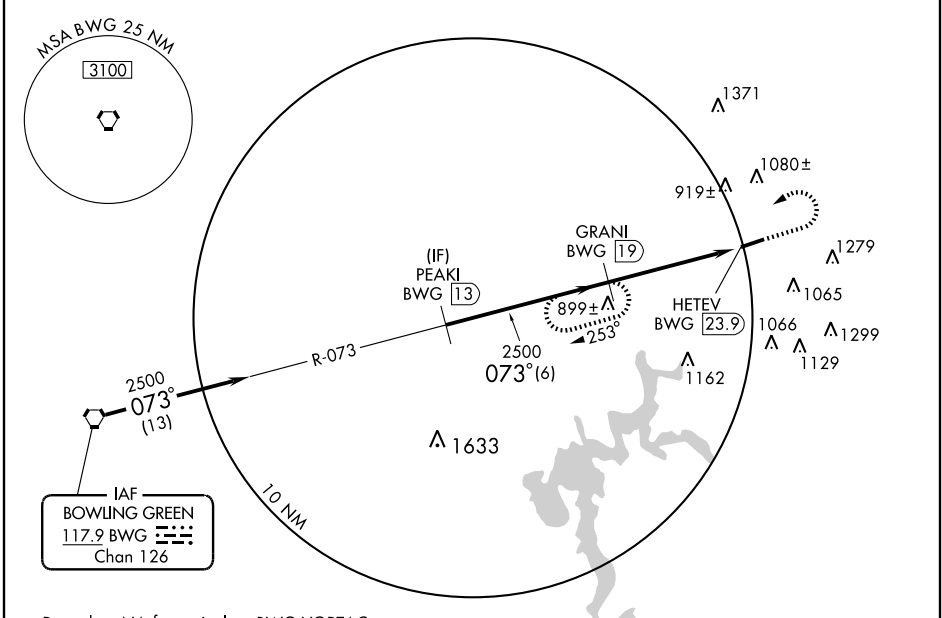
# VOR/DME RWY 7 GLASGOW MUNI (GLW)

VORTAC BWG <b>117.9</b> Chan <b>126</b>	APP CRS <b>073°</b>	Rwy ldg <b>5000</b> TDZE <b>709</b> Apt Elev <b>716</b>
---	------------------------	---

**▼** When local altimeter setting not received, use Bowling Green altimeter setting and increase all MDAs 160 feet, S-7 Cat. C and D visibility ¼ mile, Circling Cat. C visibility ½ mile, Cat. D ¼ mile. Visibility reduction by helicopters NA.

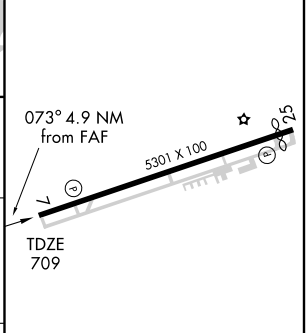
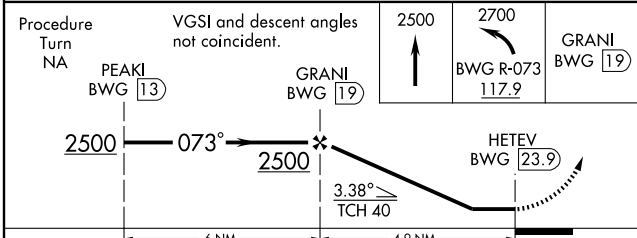
**MISSED APPROACH:** Climb to 2500 then climbing left turn to 2700 via BWG VORTAC R-073 to GRANI/19 DME and hold

AWOS-3 <b>118.525</b>	MEMPHIS CENTER <b>132.1 263.1</b>	UNICOM <b>122.8 (CTAF) 0</b>
--------------------------	--------------------------------------	---------------------------------



Procedure NA for arrival on BWG VORTAC airway radials 039 CW 106.

ELEV 716	Rwy 7 ldg 5000'
	Rwy 25 ldg 5000'



CATEGORY	A	B	C	D
S-7	1180-1 471 (500-1)	1180-1¼ 471 (500-1¼)	1180-1½ 471 (500-1½)	1180-1¾ 471 (500-1¾)
CIRCLING	1220-1 504 (600-1)	1240-1¼ 524 (600-1¼)	1260-1½ 544 (600-1½)	1540-2¾ 824 (900-2¾)

HIRL Rwy 7-25 0					
REIL Rwy 7 and 25 0					
Knots	60	90	120	150	180
Min:Sec					

GLASGOW, KENTUCKY  
Amdt 8 08157

37°02'N-85°57'W

# GLASGOW MUNI (GLW) VOR/DME RWY 7

SE-1, 22 OCT 2009 to 19 NOV 2009

SE-1, 22 OCT 2009 to 19 NOV 2009