

RNAV (GPS) RWY 25

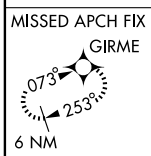
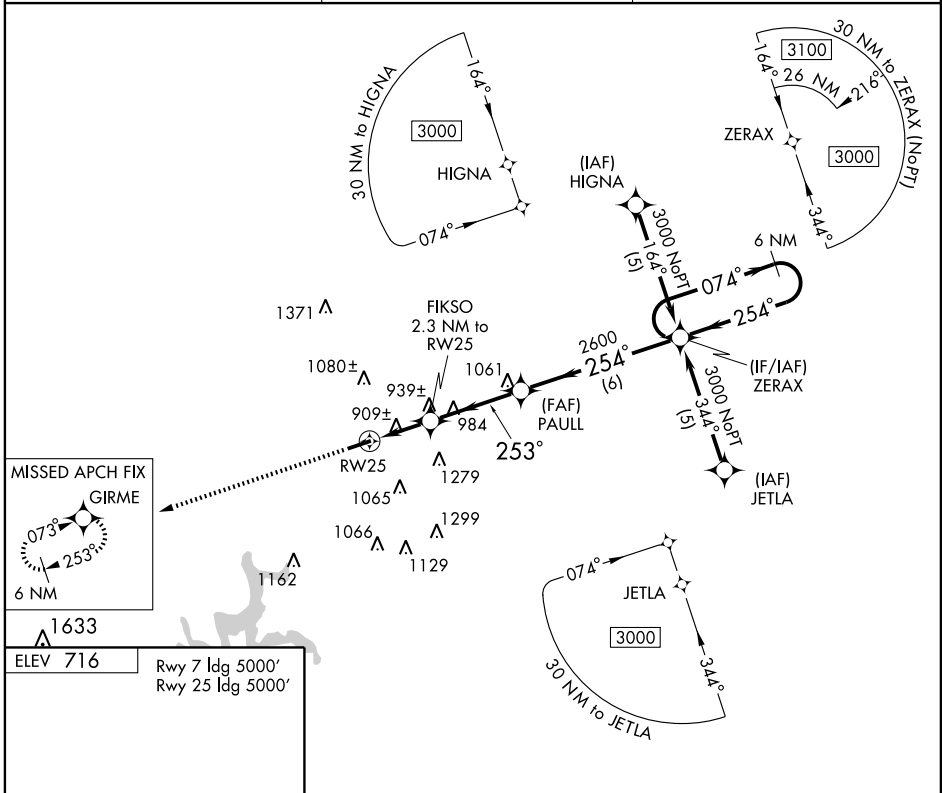
GLASGOW MUNI (GLW)

APP CRS	Rwy Idg	5000
253°	TDZE	715
	Apt Elev	716

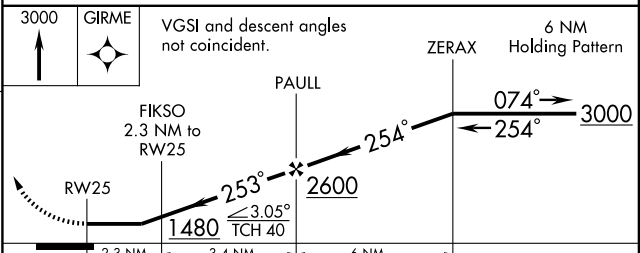
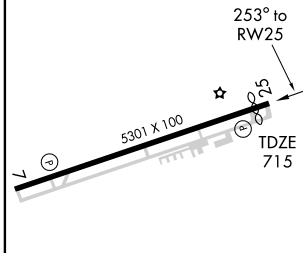
⚠ When local altimeter setting not received, use Bowling Green altimeter setting and increase all MDA 160 feet, LNAV Cat. C and D visibility ½ mile, Circling Cat. C ½ mile, Cat. D ¼ mile.
⚠ Visibility reduction by helicopters NA. DME/DME RNP-0.3 NA.

MISSED APPROACH:
 Climb to 3000 direct GIRME and hold.

AWOS-3 118.525	MEMPHIS CENTER 132.1 263.1	UNICOM 122.8 (CTAF) 0
--------------------------	--------------------------------------	----------------------------------------



ELEV 716	Rwy 7 Idg 5000'
	Rwy 25 Idg 5000'



CATEGORY	A	B	C	D
LNAV MDA	1200-1	485 (500-1)	1200-1¼ 485 (500-1¼)	1200-1½ 485 (500-1½)
CIRCLING	1220-1 504 (600-1)	1240-1 524 (600-1)	1260-1½ 544 (600-1½)	1540-2¾ 824 (900-2¾)

SE-1, 22 OCT 2009 to 19 NOV 2009

SE-1, 22 OCT 2009 to 19 NOV 2009