

BURWELL, NEBRASKA

AL-5817 (FAA)

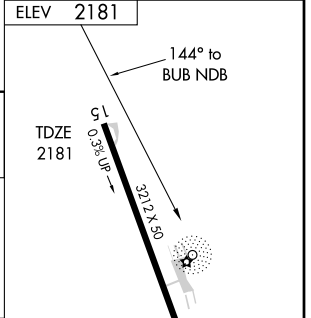
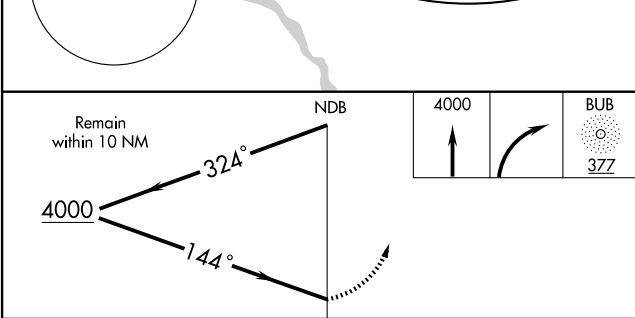
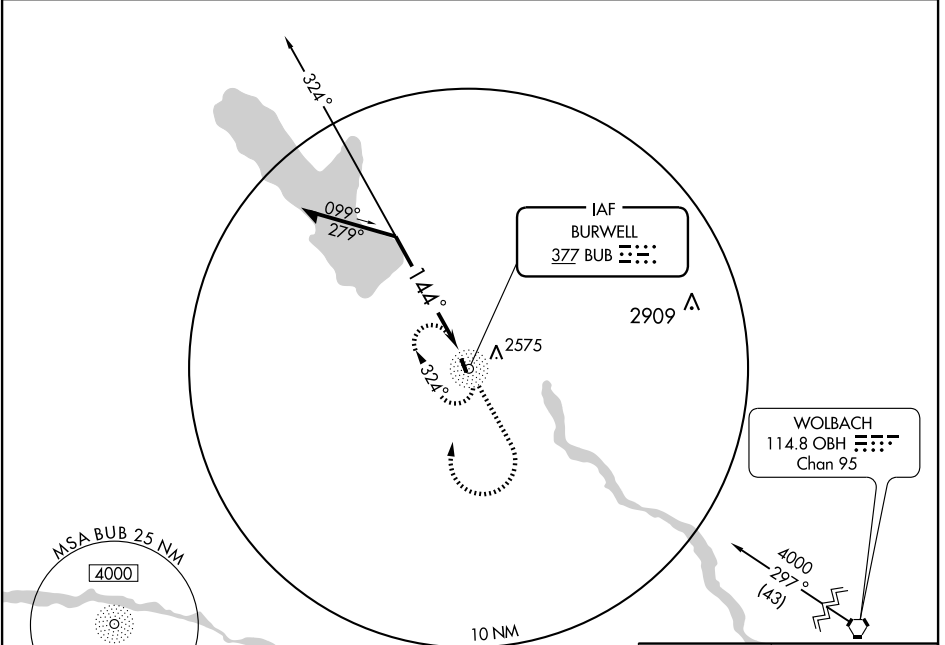
NDB RWY 15
BURWELL/CRAM FIELD (BUB)

NDB BUB 377	APP CRS 144°	Rwy Idg TDZE Apt Elev	3212 2181 2181
-----------------------	------------------------	-----------------------------	---

Use Evelyn Sharp Field altimeter setting; when not received, use Grand Island altimeter setting.
▲ NA

MISSED APPROACH: Climb to 4000 then right turn direct BUB NDB and hold.

DENVER CENTER 132.7 397.85	CTAF 122.9
--------------------------------------	----------------------



CATEGORY	A	B	C	D
S-15	2980-1 799 (800-1)	2980-1¼ 799 (800-1¼)		NA
CIRCLING	2980-1 799 (800-1)	2980-1¼ 799 (800-1¼)		NA
GRAND ISLAND ALTIMETER SETTING MINIMUMS				
S-15	3120-1¼	939 (1000-1¼)		NA
CIRCLING	3120-1¼	939 (1000-1¼)		NA

ELEV	2181
TDZE	2181
MIRL Rwy 15-33	
Knots	60 90 120 150 180
Min:Sec	

NC-2, 22 OCT 2009 to 19 NOV 2009

NC-2, 22 OCT 2009 to 19 NOV 2009

BURWELL, NEBRASKA
Orig 03023

41°47'N-99°09'W

BURWELL/CRAM FIELD (BUB)
NDB RWY 15