

VOR/DME-A

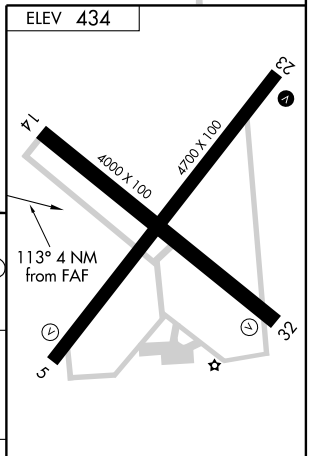
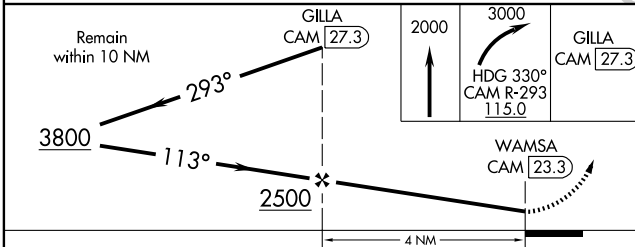
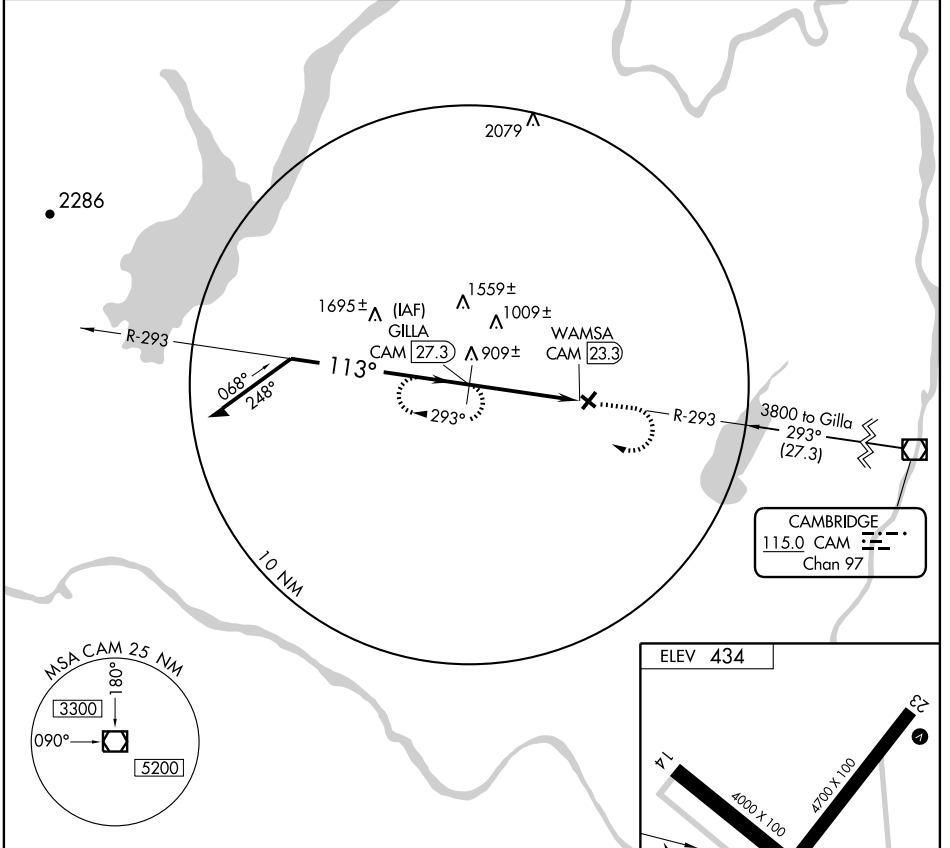
SARATOGA SPRINGS / SARATOGA COUNTY (5B2)

VOR/DME CAM <b>115.0</b> Chan <b>97</b>	APP CRS <b>113°</b>	Rwy Idg TDZE Apt Elev <b>N/A</b> <b>N/A</b> <b>434</b>
---	------------------------	---

**NA** Circling to Rwy 05/23 NA at night. When local altimeter setting not received use Albany altimeter setting and increase all MDA 80 feet, and Cat A, C and D visibility ¼ mile.

MISSED APPROACH: Climb to 2000 then climbing right turn to 3000 via heading 330° and CAM VOR/DME R-293 to GILLA/CAM 27.3 DME and hold.

AWOS-3 <b>132.025</b>	ALBANY APP CON <b>118.05 263.075</b>	CLNC DEL (GCO) <b>118.125</b>	UNICOM <b>122.8</b> (CTAF) <b>0</b>
--------------------------	---	----------------------------------	--



CATEGORY	A	B	C	D
CIRCLING	1260-1 826 (900-1)	1260-1¼ 826 (900-1¼)	1260-2½ 826 (900-2½)	1260-2¾ 826 (900-2¾)

REIL Rwy 23 **0** and 5 and 32  
MIRL Rwy 5-23 **0** and 14-32

NE-2, 22 OCT 2009 to 19 NOV 2009

NE-2, 22 OCT 2009 to 19 NOV 2009

VOR/DME-A