

# RNAV (GPS) RWY 5

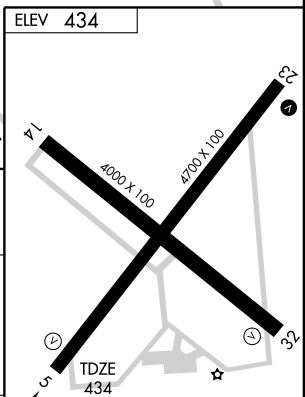
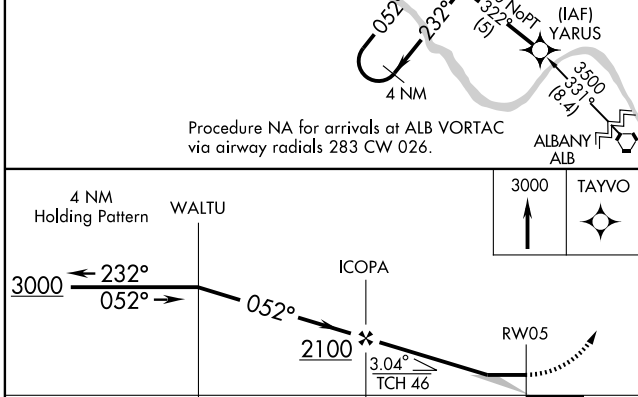
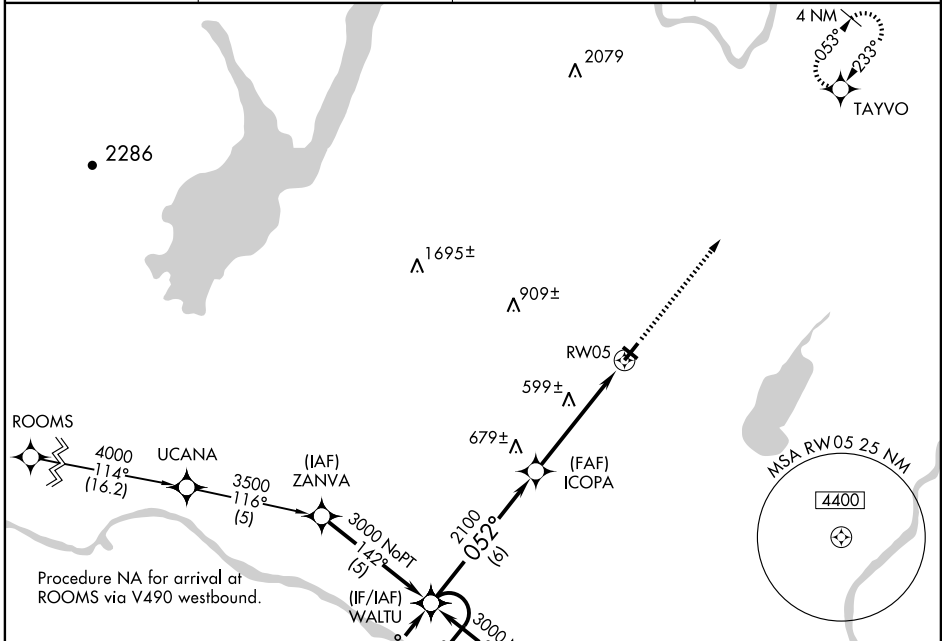
SARATOGA SPRINGS / SARATOGA COUNTY (5B2)

APP CRS	Rwy Idg	<b>4700</b>
<b>052°</b>	TDZE	<b>434</b>
	Apt Elev	<b>434</b>

**V** Circling to Rwy 05/23 NA at night. DME/DME RNP-0.3 NA. Visibility reduction by helicopters NA. When local altimeter setting not received, use Albany altimeter setting and increase all MDA 80 ft, LNAV Cat C/D, Circling Cat C visibility 1/4 mile, and Circling Cat D visibility 1/2 mile.

**Δ** NA MISSED APPROACH: Climb to 3000 direct TAYVO and hold.

AWOS-3 <b>132.025</b>	ALBANY APP CON <b>118.05 263.075</b>	CLNC DEL (GCO) <b>118.125</b>	UNICOM <b>122.8</b> (CTAF) <b>0</b>
--------------------------	---	----------------------------------	--



CATEGORY	A	B	C	D
LNAV MDA	860-1	426 (500-1)	860-1 1/4	426 (500-1 1/4)
CIRCLING	1000-1 566 (600-1)	1020-1 586 (600-1)	1080-1 1/4 646 (700-1 1/4)	1100-2 666 (700-2)

REIL Rwy 23 **0** and 5 and 32  
MIRL Rwy 5-23 **0** and 14-32

# RNAV (GPS) RWY 5

NE-2, 22 OCT 2009 to 19 NOV 2009

NE-2, 22 OCT 2009 to 19 NOV 2009