

WAAS CH <b>56611</b> <b>W23A</b>	APP CRS <b>233°</b>	Rwy Idg <b>4700</b> TDZE <b>431</b> Apt Elev <b>434</b>
--	------------------------	---

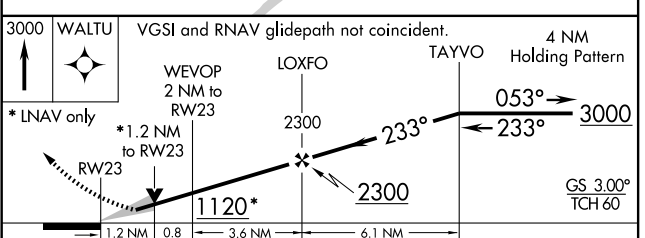
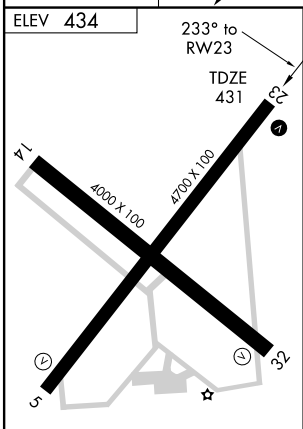
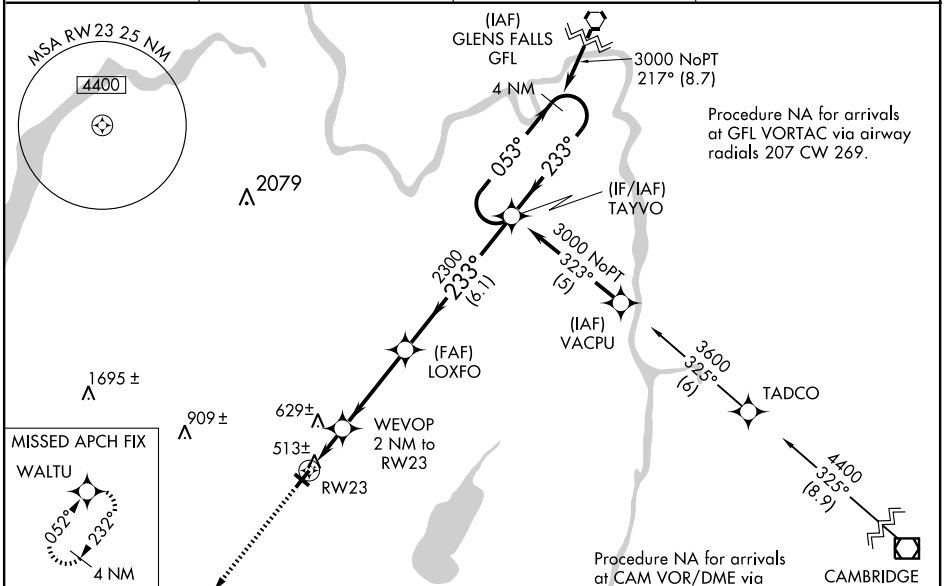
# RNAV (GPS) RWY 23

SARATOGA SPRINGS / SARATOGA COUNTY (5B2)

Baro-VNAV NA when using Albany altimeter setting. For uncompensated Baro-VNAV systems, LNAV/VNAV NA below -15°C (5°F) or above 48°C (118°F).  
 DME/DME RNP-0.3 NA. Visibility reduction by helicopters NA. When local altimeter setting not received use Albany altimeter setting and increase all DA 64 feet, and MDA 80 feet. Increase LPV and LNAV/VNAV all Cats visibility ¼ mile.  
 Increase LNAV and Circling Cat. C visibility ¼ mile and Circling Cat. D visibility ½ mile.  
 VDP NA when using Albany altimeter setting.

MISSED APPROACH: Climb to 3000 direct WALTU and hold.

AWOS-3 <b>132.025</b>	ALBANY APP CON <b>118.05 263.075</b>	CLNC DEL (GCO) <b>118.125</b>	UNICOM <b>122.8 (CTAF) 0</b>
--------------------------	---	----------------------------------	---------------------------------



CATEGORY	A	B	C	D
LPV DA	745-1 314 (400-1)			
LNAV/VNAV DA	1046-2¼ 615 (700-2¼)			
LNAV MDA	860-1 429 (500-1)	860-1¼ 429 (500-1¼)	860-1½ 429 (500-1½)	
CIRCLING	1000-1 566 (600-1)	1020-1 586 (600-1)	1080-1¾ 646 (700-1¾)	1100-2 666 (700-2)

REIL Rwy 23 0  
 MIRL Rwy 5-23 0  
 MIRL Rwy 14-32  
 REIL Rwy 5 and 32

NE-2, 22 OCT 2009 to 19 NOV 2009

NE-2, 22 OCT 2009 to 19 NOV 2009