

APP CRS	Rwy Idg	3710
255°	TDZE	185
	Apt Elev	193

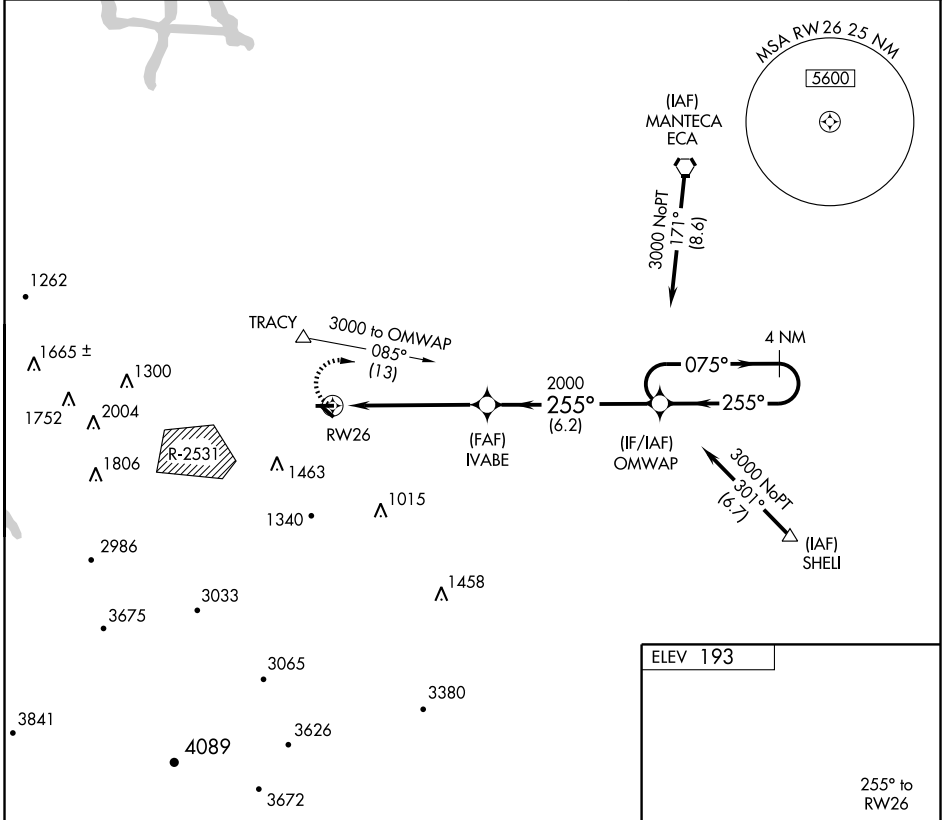
RNAV (GPS) RWY 26

TRACY MUNI (TCY)

NA DME/DME RNP-0.3 NA. Visibility reduction by helicopters NA. When local altimeter setting not received use Stockton Metropolitan altimeter setting and increase all MDA 60 feet. Circling NA Southwest of Rwy 12-30.

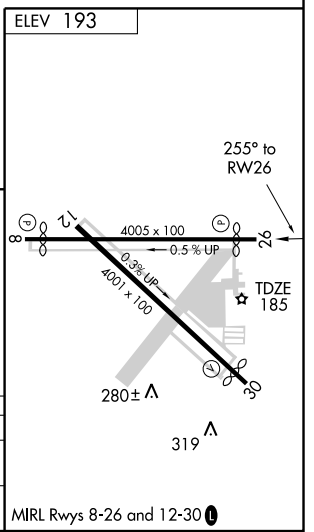
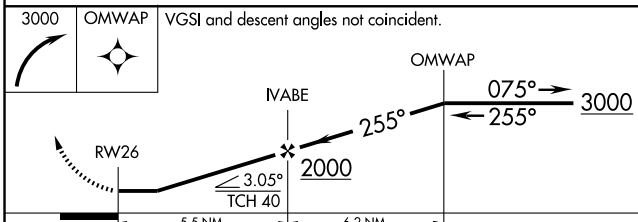
MISSED APPROACH: Climbing right turn to 3000 direct to OMWAP and hold.

AWOS-3 118.375	NORCAL APP CON 123.85 278.3	UNICOM 122.8 (CTAF)
--------------------------	---------------------------------------	-------------------------------



SW-2, 22 OCT 2009 to 19 NOV 2009

SW-2, 22 OCT 2009 to 19 NOV 2009



CATEGORY	A	B	C	D
RNAV MDA	600-1	415 (500-1)	600-1¼ 415 (500-1¼)	NA
CIRCLING	600-1 407 (500-1)	660-1 467 (500-1)	660-1½ 467 (500-1½)	NA

MIRL Rwy 8-26 and 12-30