

# RNAV (GPS) RWY 12

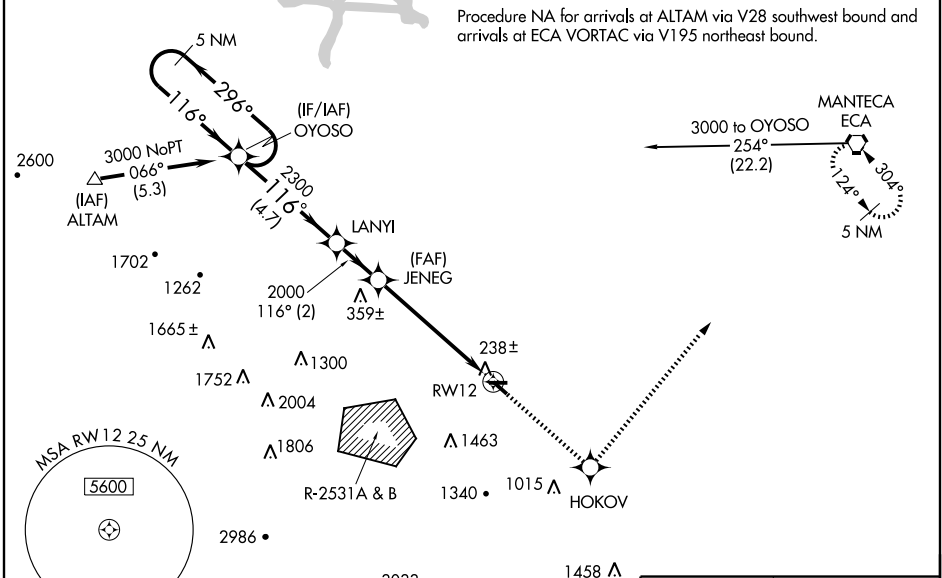
TRACY MUNI (TCY)

WAAS CH <b>49200</b> W12A	APP CRS <b>116°</b>	Rwy Idg TDZE <b>193</b> Apt Elev <b>193</b>	<b>4001</b>
---------------------------------	------------------------	---	-------------

**▼** If local altimeter setting not received, use Stockton Metropolitan altimeter setting and increase all DAs/MDAs 60 feet.  
**▲ NA** For uncompensated Baro-VNAV systems, LNAV/VNAV NA below -15°C (5°F) or above 97°C (207°F).  
**W** Baro-VNAV NA when using Stockton Metropolitan altimeter setting. DME/DME RNP -0.3 NA. Circling NA southwest of Rwy 12-30. Visibility reduction by helicopters NA.

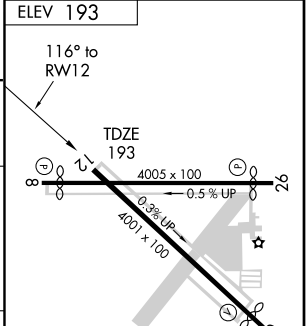
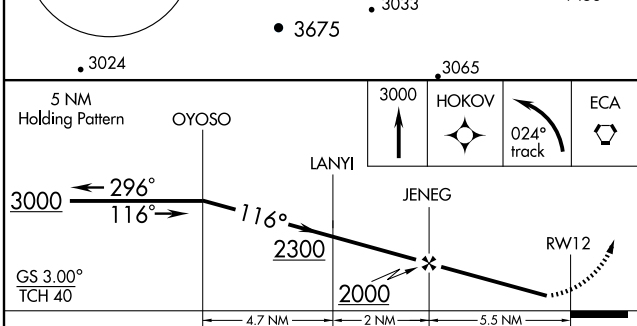
**MISSED APPROACH:** Climb to 3000 direct HOKOV and left turn via 024° track to ECA VORTAC and hold.

AWOS-3 <b>118.375</b>	NORCAL APP CON <b>123.85 278.3</b>	UNICOM <b>122.8 (CTAF) 0</b>
--------------------------	---------------------------------------	---------------------------------



SW-2, 22 OCT 2009 to 19 NOV 2009

SW-2, 22 OCT 2009 to 19 NOV 2009



CATEGORY	A	B	C	D
LPV DA	448-1	255 (300-1)		NA
LNAV/VNAV DA	656-1¾	463 (500-1¾)		NA
LNAV MDA	800-1	607 (700-1)	800-1¾ 607 (700-1¾)	NA
CIRCLING	800-1¾ 607 (700-1¾)			NA

MRL Rwy 8-26 and 12-30 0