

NDB TCY <b>203</b>	APP CRS <b>114°</b>	Rwy Idg TDZE Apt Elev	<b>4001</b> <b>193</b> <b>193</b>
-----------------------	------------------------	-----------------------------	---

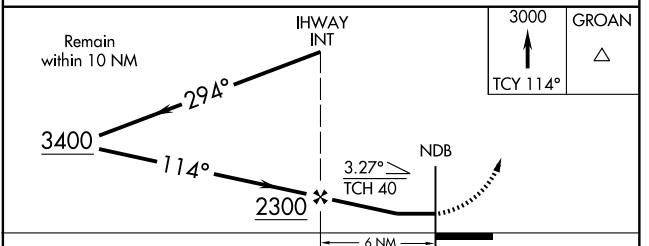
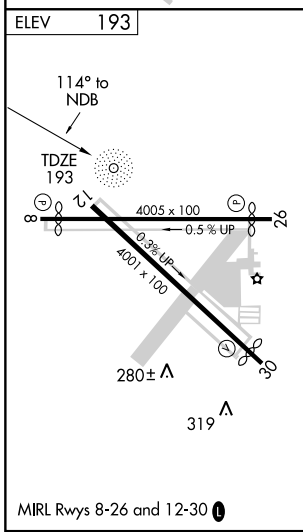
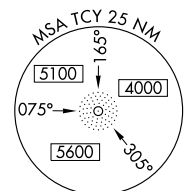
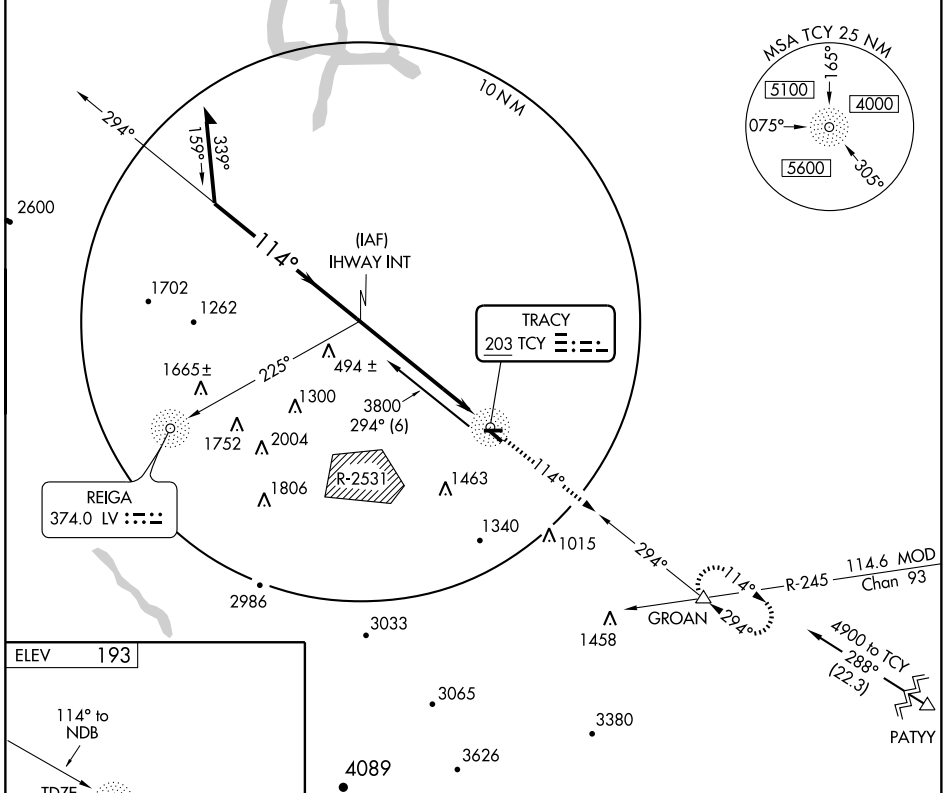
# NDB RWY 12

TRACY MUNI (TCY)

**NA** Circling NA southwest of Rwy 12-30.  
When local altimeter setting not received use Stockton Metro altimeter setting and increase all MDA 60 feet.

**MISSED APPROACH:** Climb to 3000 via 114° bearing from TCY NDB to GROAN INT and hold.

AWOS-3 <b>118.375</b>	NORCAL APP CON <b>123.85 278.3</b>	UNICOM <b>122.8</b> (CTAF) <b>Q</b>
--------------------------	---------------------------------------	--



CATEGORY	A	B	C	D
S-12	840-1 647 (700-1)		840-1 <sup>3</sup> / <sub>4</sub> 647 (700-1 <sup>3</sup> / <sub>4</sub> )	NA
CIRCLING	840-1 647 (700-1)		840-1 <sup>3</sup> / <sub>4</sub> 647 (700-1 <sup>3</sup> / <sub>4</sub> )	NA

SW-2, 22 OCT 2009 to 19 NOV 2009

SW-2, 22 OCT 2009 to 19 NOV 2009