

VOR or GPS-A

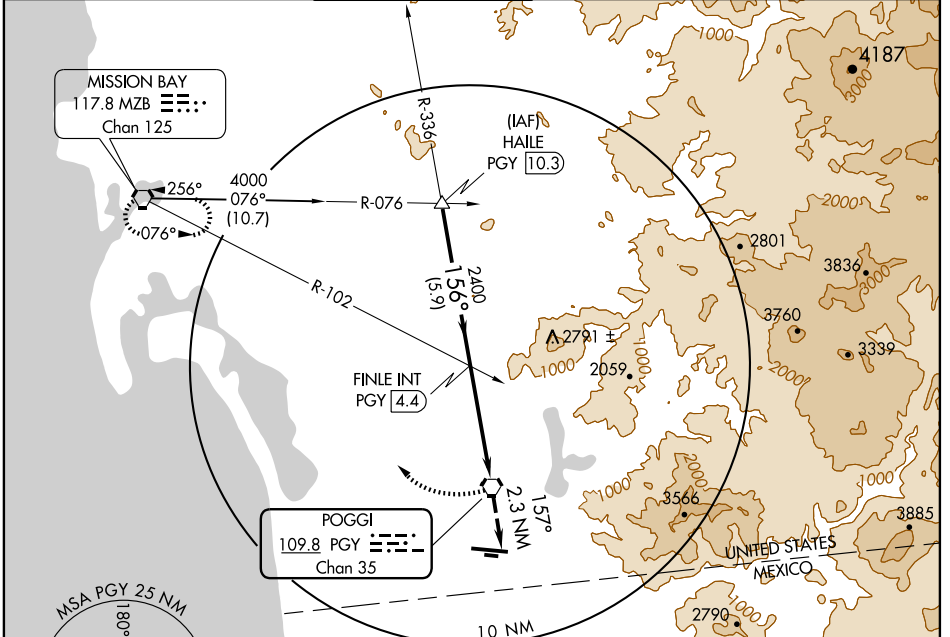
SAN DIEGO/ BROWN FIELD MUNI (SDM)

VORTAC PGY 109.8 Chan 35	APP CRS 156°	Rwy Idg TDZE Apt Elev 524	N/A N/A 524
--	------------------------	---	-------------------

▼ When control tower closed, use San Diego Intl altimeter setting minimums.
▲ Circling not authorized south of runway 8R-26L.

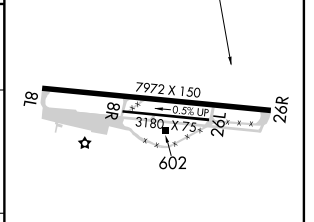
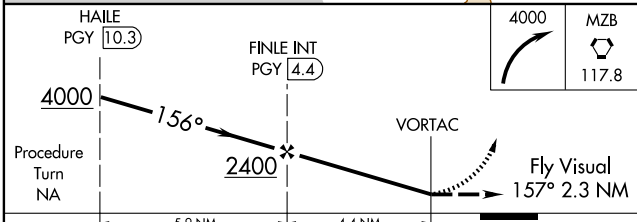
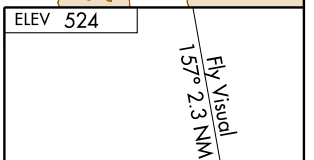
MISSED APPROACH: Climbing right turn to 4000 direct MZB VORTAC and hold.

ATIS 132.35	SOCAL APP CON 124.35 279.625	BROWN TOWER * 126.5 (CTAF) 288.1 128.25 (8R/26L)	GND CON 124.4	CLNC DEL 124.4	UNICOM 122.95
-----------------------	--	--	-------------------------	--------------------------	-------------------------



SW-3, 22 OCT 2009 to 19 NOV 2009

SW-3, 22 OCT 2009 to 19 NOV 2009



CATEGORY	A	B	C	D
CIRCLING		1220-2¾	696 (700-2¾)	
SAN DIEGO INTL. ALTIMETER SETTING MINIMUMS				
CIRCLING		1340-2¾	816 (900-2¾)	

MIRL Rwy 8L-26R