

# RNAV (GPS) RWY 8L

SAN DIEGO/ BROWN FIELD MUNI (SDM)

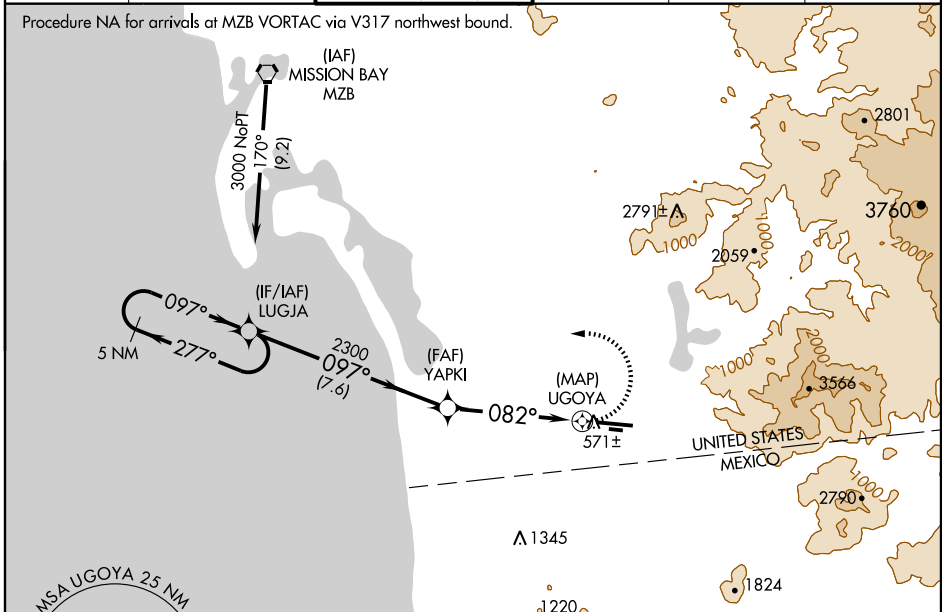
APP CRS **082°**  
 Rwy Idg **7972**  
 TDZE **526**  
 Apt Elev **526**

**▽** DME/DME RNP -0.3 NA.  
**▲** Circling NA south of Rwy 8R-26L.  
 If local altimeter setting not received, use San Diego Intl altimeter setting and increase all MDAs 120 feet.  
 VDP NA when using San Diego Intl altimeter setting.

MISSED APPROACH: Climbing left turn to 3000 direct LUGJA and hold.

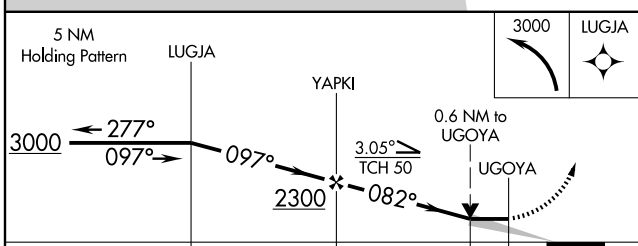
|                       |  |  |                         |                          |                         |
|-----------------------|--|--|-------------------------|--------------------------|-------------------------|
| ATIS<br><b>132.35</b> | SOCAL APP CON<br><b>124.35 279.625</b> | BROWN TOWER *<br><b>126.5 (CTAF) 288.1</b><br><b>128.25 (8R/26L)</b> | GND CON<br><b>124.4</b> | CLNC DEL<br><b>124.4</b> | UNICOM<br><b>122.95</b> |
|-----------------------|--|--|-------------------------|--------------------------|-------------------------|

Procedure NA for arrivals at MZB VORTAC via V317 northwest bound.



SW-3, 22 OCT 2009 to 19 NOV 2009

SW-3, 22 OCT 2009 to 19 NOV 2009



| CATEGORY | A                    | B                     | C                       | D                     |
|----------|----------------------|-----------------------|-------------------------|-----------------------|
| LNAV MDA | 940-1                | 414 (500-1)           | 940-1¼                  | 414 (500-1¼)          |
| CIRCLING | 980-1<br>454 (500-1) | 1020-1<br>494 (500-1) | 1020-1½<br>494 (500-1½) | 1080-2<br>554 (600-2) |

