

PEKIN, ILLINOIS

AL-5812 (FAA)

RNAV (GPS) RWY 9

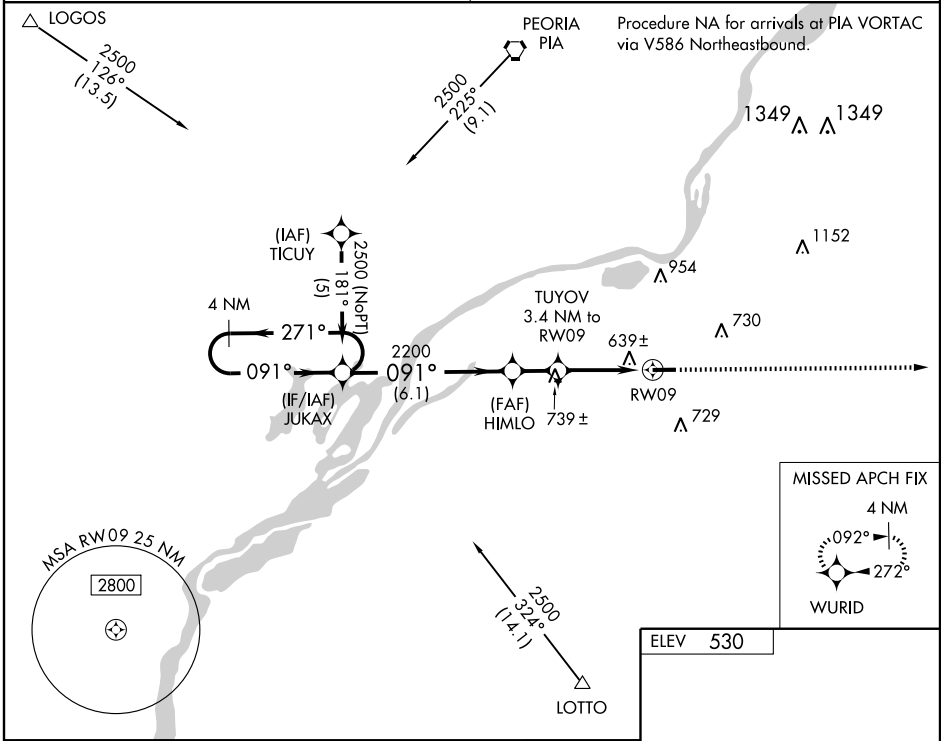
PEKIN MUNI (C15)

WAAS CH 53509 W09A	APP CRS 091°	Rwy Idg TDZE Apt Elev	5000 530 530
--	------------------------	-----------------------------	---

⚠ NA Baro-VNAV NA. DME/DME RNP-0.3 NA. Visibility reduction by helicopters NA.
⚠ NA Use Greater Peoria Rgnl altimeter setting; when not recieved use Logan County altimeter setting and increase all DA 25 feet and all MDA 40 feet; increase LNAV/VNAV visibility ¼ mile and LNAV Cat. D visibility ¼ mile.

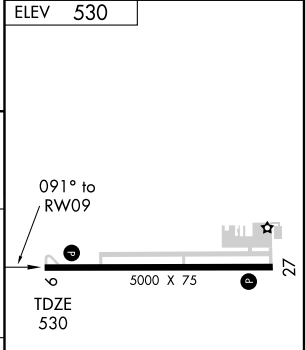
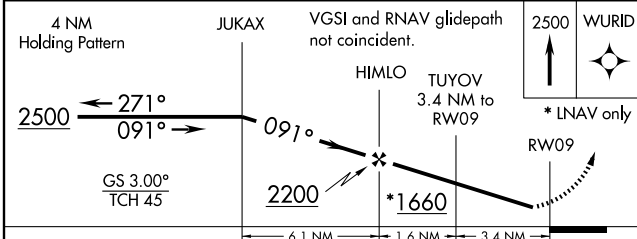
MISSED APPROACH:
Climb to 2500 direct WURID and hold.

PEORIA APP CON 124.675 269.2	UNICOM 122.8 (CTAF) 0
--	--



EC-3, 22 OCT 2009 to 19 NOV 2009

EC-3, 22 OCT 2009 to 19 NOV 2009



CATEGORY	A	B	C	D
LPV DA		862-1¼	332 (400-1¼)	
LNAV/VNAV DA		982-1½	452 (500-1½)	
LNAV MDA	940-1	410 (500-1)	940-1¼	410 (500-1¼)
CIRCLING	1000-1	470 (500-1)	1020-1½	1080-2 550 (600-2)

ELEV 530
 TDZE 530
 HIRL Rwy 9-27 **0**

PEKIN, ILLINOIS
 Orig 08269

40°29'N - 89°41'W

RNAV (GPS) RWY 9

PEKIN MUNI (C15)