

PEKIN, ILLINOIS

AL-5812 (FAA)

RNAV (GPS) RWY 27

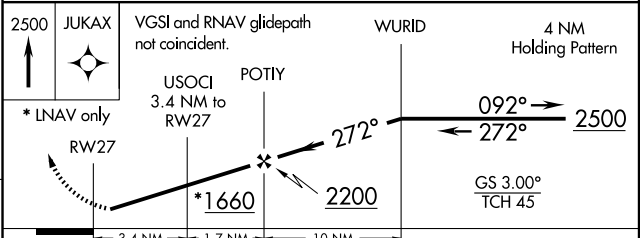
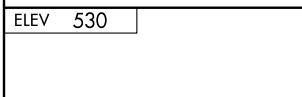
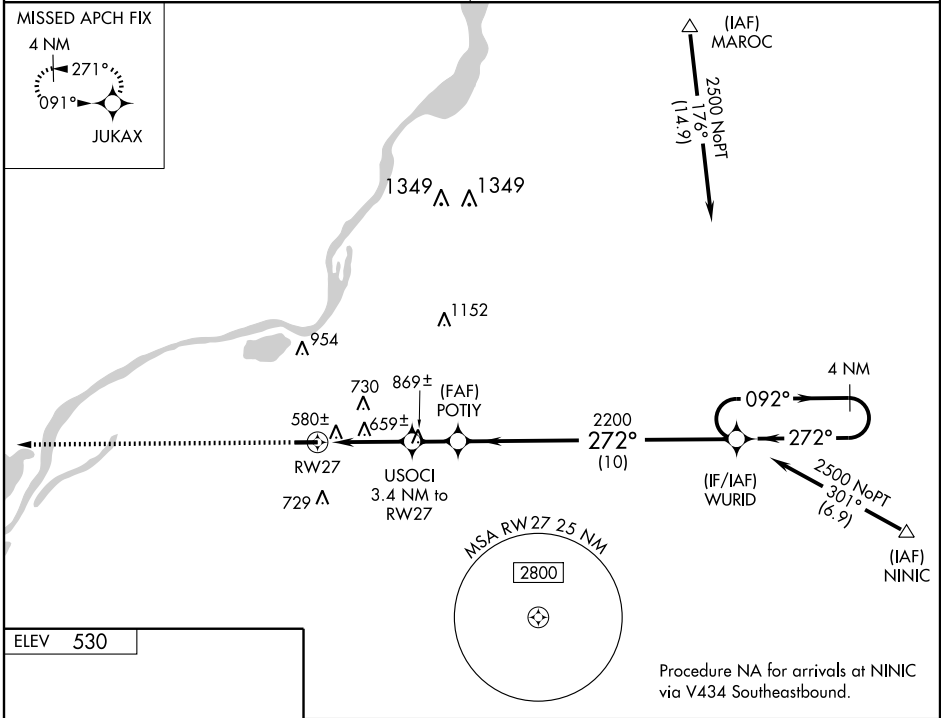
PEKIN MUNI (C15)

WAAS CH 99509 W27A	APP CRS 272°	Rwy Idg TDZE Apt Elev	5000 525 530
--	------------------------	-----------------------------	---

▽ Baro-VNAV NA. DME/DME RNP-0.3 NA. Visibility reduced by helicopters NA.
△ NA Use Greater Peoria Rgnl altimeter setting; when not received use Logan County altimeter setting and increase all DA 25 feet and all MDA 40 feet.

MISSED APPROACH:
Climb to 2500 direct JUKAX and hold.

PEORIA APP CON 124.675 269.2	UNICOM 122.8 (CTAF) 0
--	--



CATEGORY	A	B	C	D
LPV DA		864-1 ¼	339 (400-1 ¼)	
LNAV/VNAV DA		949-1 ½	424 (500-1 ½)	
LNAV MDA	960-1	435 (500-1)	960-1 ¼ 435 (500-1 ¼)	960-1 ½ 435 (500-1 ½)
CIRCLING	1000-1	470 (500-1)	1020-1 ½ 490 (500-1 ½)	1080-2 550 (600-2)

PEKIN, ILLINOIS
Orig 08269

40°29'N - 89°41'W

RNAV (GPS) RWY 27

EC-3, 22 OCT 2009 to 19 NOV 2009

EC-3, 22 OCT 2009 to 19 NOV 2009