

# RNAV (GPS) RWY 35

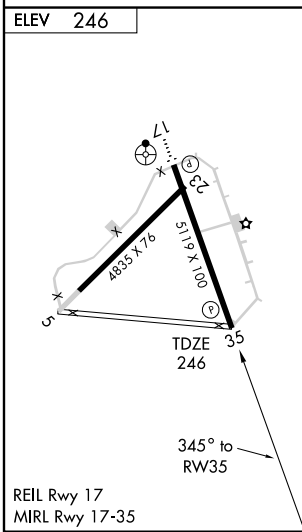
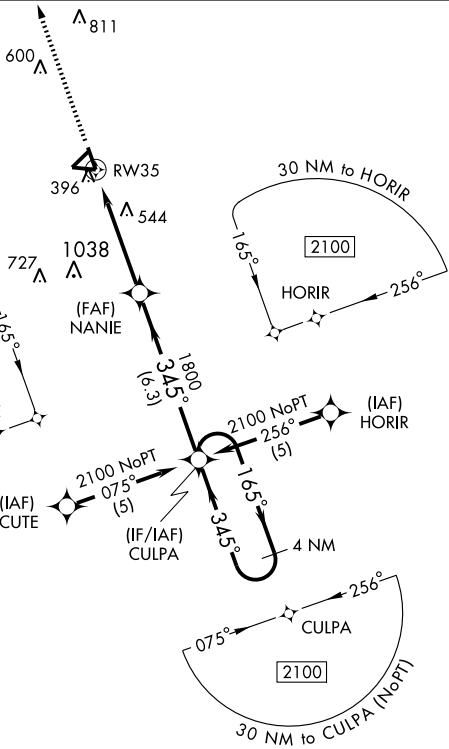
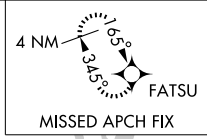
BARNWELL RGNL (BNL)

APP CRS <b>345°</b>	Rwy Idg <b>5119</b>
	TDZE <b>246</b>
	Apt Elev <b>246</b>

DME/DME RNP-0.3 NA. Visibility reduction by helicopters NA. When local altimeter setting not received, use Augusta Rgnl at Bush Field altimeter setting and increase all MDAs 100 feet and increase LNAV Cat. C/D visibilities ¼ mile, Circling Cat. C visibility ¼ mile and Cat. D visibility ½ mile. VDP NA when using Augusta Rgnl at Bush Field altimeter setting.

MISSED APPROACH: Climb to 2200 direct FATSU and hold.

AWOS-3 <b>119.775</b>	JACKSONVILLE CENTER <b>132.5 363.2</b>	UNICOM <b>122.8 (CTAF)</b>
--------------------------	---	-------------------------------



2200	FATSU	CULPA 4 NM Holding Pattern			
1.8 NM to RW35		NANIE		165° → 2100	
RW35		1800		← 345°	
1.8		2.9 NM		6.3 NM	
CATEGORY	A	B	C	D	
LNAV MDA	860-1 614 (700-1)		860-1 <sup>3</sup> / <sub>4</sub> 614 (700-1 <sup>3</sup> / <sub>4</sub> )	860-2 614 (700-2)	
CIRCLING	860-1 614 (700-1)		860-1 <sup>3</sup> / <sub>4</sub> 614 (700-1 <sup>3</sup> / <sub>4</sub> )	900-2 654 (700-2)	

SE-2, 22 OCT 2009 to 19 NOV 2009

SE-2, 22 OCT 2009 to 19 NOV 2009