

SLIDELL, LOUISIANA

AL-5806 (FAA)

VOR/DME PCU 112.2 Chan 59	APP CRS 195°	Rwy Idg 4057 TDZE 28 Apt Elev 28
---	------------------------	---

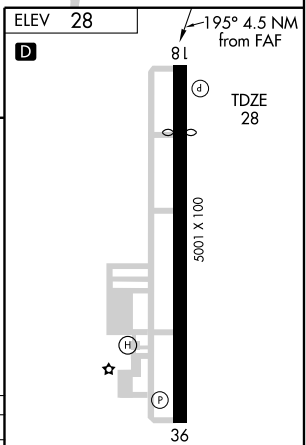
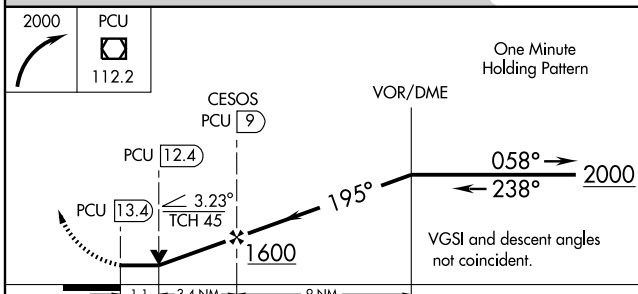
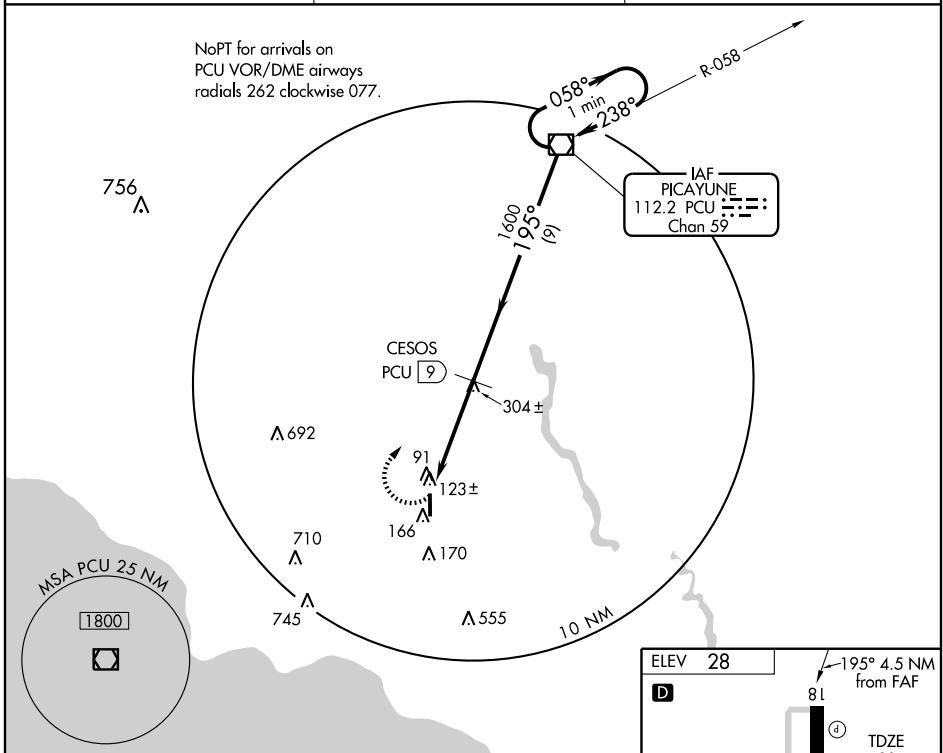
VOR/DME RWY 18

SLIDELL (ASD)

▲ NA

MISSED APPROACH: Climbing right turn to 2000 direct PCU VOR/DME and hold.

ASOS 132.475	NEW ORLEANS APP CON 133.15 290.3	UNICOM 122.8 (CTAF) 0
------------------------	--	---------------------------------



CATEGORY	A	B	C	D
S-18	460-1	432 (500-1)	460-1½ 432 (500-1½)	NA
CIRCLING	480-1	452 (500-1)	480-1½ 452 (500-1½)	NA

REIL Rwy 18 and 36 0

MIRL Rwy 18-36 0

SLIDELL, LOUISIANA
Amdt 4 08325

30°21'N-89°49'W

VOR/DME RWY 18

SC-4, 22 OCT 2009 to 19 NOV 2009

SC-4, 22 OCT 2009 to 19 NOV 2009