

FARMVILLE, VIRGINIA

AL-5805 (FAA)

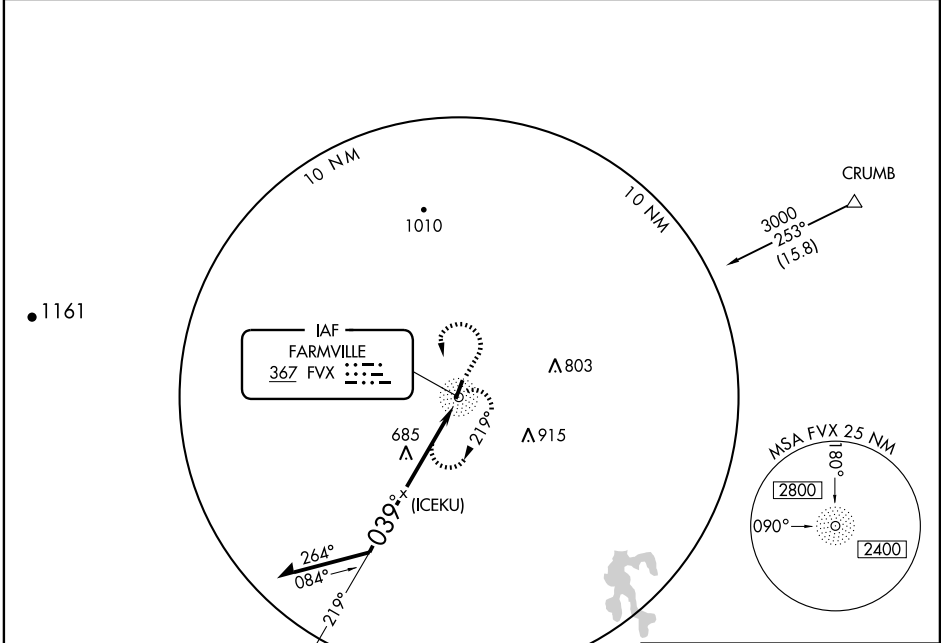
# NDB or GPS RWY 3

FARMVILLE RGNL (FVX)

NDB FVX <b>367</b>	APP CRS <b>039°</b>	Rwy Ldg <b>4400</b>
		TDZE <b>410</b>
		Apt Elev <b>417</b>

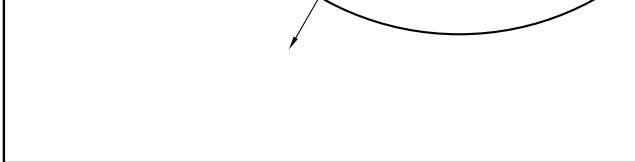
**NA** MISSED APPROACH: Climb to 2300, then left turn direct FVX NDB and hold.

AWOS-3 <b>132.725</b>	WASHINGTON CENTER <b>135.4 263.1</b>	UNICOM <b>122.8 (CTAF)</b>	GCO <b>135.075</b>
--------------------------	---	-------------------------------	-----------------------

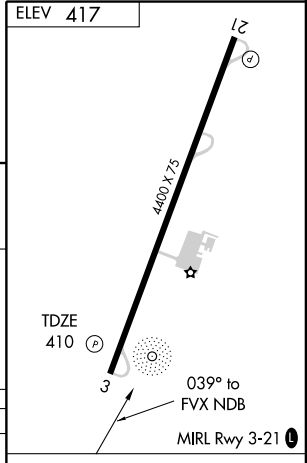


NE-3, 22 OCT 2009 to 19 NOV 2009

NE-3, 22 OCT 2009 to 19 NOV 2009



Remain within 10 NM	NDB	2300	FVX 367
2300	219°	(ICEKU)	039°
	4 NM		



CATEGORY	A	B	C	D
S-3	1220-1 810 (900-1)	1220-1¼ 810 (900-1¼)	1220-2¼ 810 (900-2¼)	NA
CIRCLING	1220-1 803 (900-1)	1220-1¼ 803 (900-1¼)	1220-2¼ 803 (900-2¼)	NA

ELEV 417	21				
TDZE 410	3				
Knots	60	90	120	150	180
Min:Sec					

FARMVILLE, VIRGINIA  
Amdt 5 07354

37°21'N-78°26'W

# FARMVILLE RGNL (FVX) NDB or GPS RWY 3