

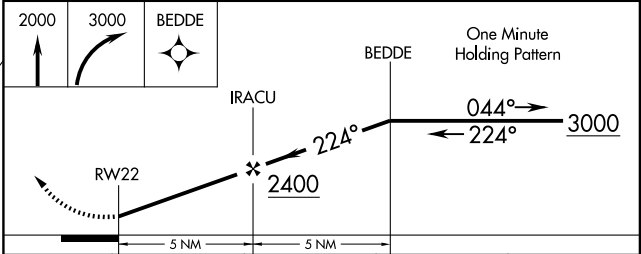
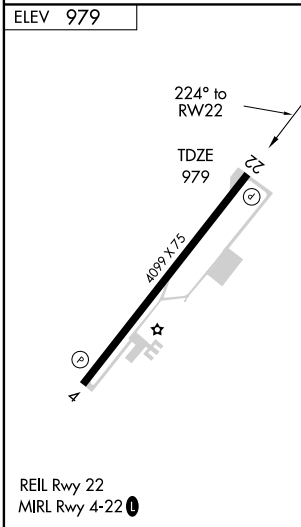
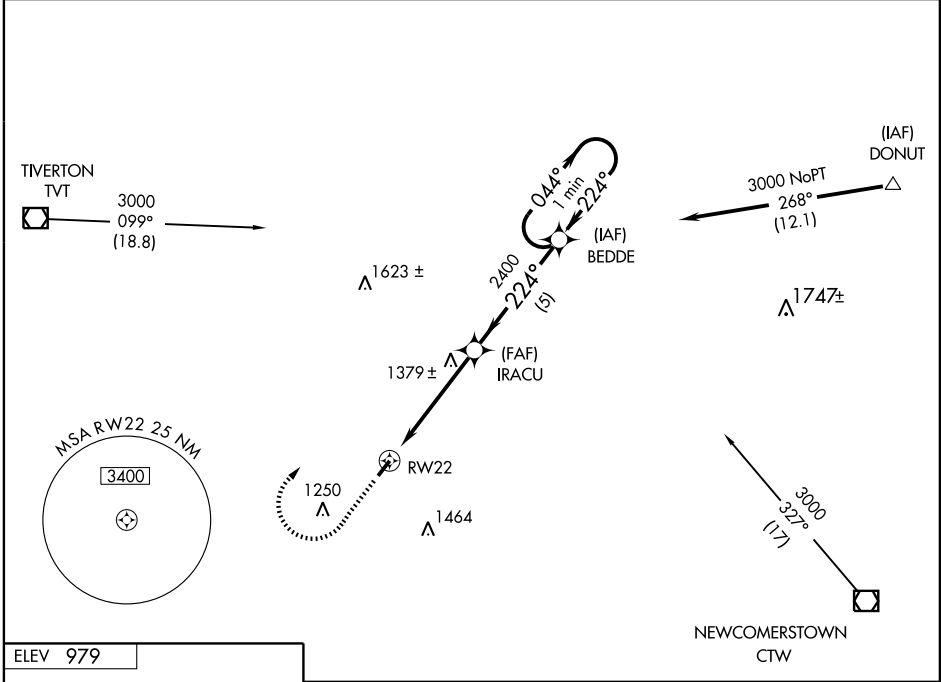
# GPS RWY 22

COSHOCTON/RICHARD DOWNING (I40)

APP CRS <b>224°</b>	Rwy Idg <b>4099</b>
	TDZE <b>979</b>
	Apt Elev <b>979</b>

<p><b>▽</b> Obtain local altimeter setting on CTAF; when not received, use Zanesville altimeter setting.</p> <p><b>△</b> NA</p>	<p><b>MISSED APPROACH:</b> Climb to 2000, then climbing right turn to 3000 direct BEDDE WP and hold.</p>
---	--

AWOS-3 <b>118.875</b>	INDIANAPOLIS CENTER <b>124.45 370.9</b>	UNICOM <b>123.0</b> (CTAF)	<b>122.9 0</b>
--------------------------	--	-------------------------------	----------------



CATEGORY	A	B	C	D
S-22	1640-1	661 (700-1)	1640-1¾ 661 (700-1¾)	1640-2 661 (700-2)
CIRCLING	1640-1	661 (700-1)	1640-1¾ 661 (700-1¾)	1820-2¾ 841 (900-2¾)
ZANESVILLE ALTIMETER SETTING MINIMUMS				
S-22	1700-1	721 (800-1)	1700-2 721 (800-2)	1700-2½ 721 (800-2½)
CIRCLING	1700-1	721 (800-1)	1700-2 721 (800-2)	1880-3 901 (1000-3)

# GPS RWY 22

EC-2, 22 OCT 2009 to 19 NOV 2009

EC-2, 22 OCT 2009 to 19 NOV 2009