

BROOKHAVEN, MISSISSIPPI

AL-5802 (FAA)

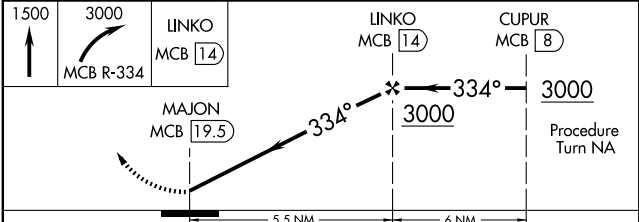
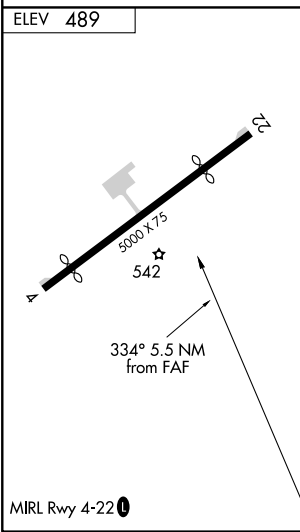
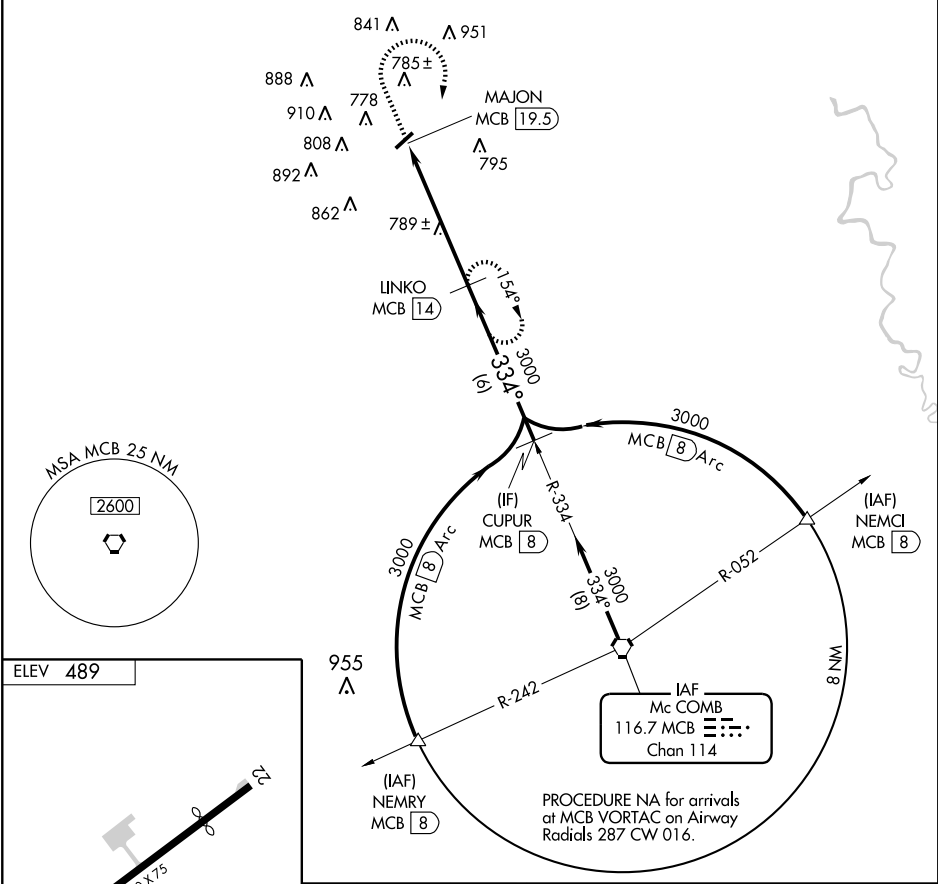
VOR/DME-A
BROOKHAVEN-LINCOLN COUNTY (1R7)

VORTAC MCB 116.7 Chan 114	APP CRS 334°	Rwy Idg TDZE Apt Elev	N/A N/A 489
---	------------------------	-----------------------------	--

⚠ Circling to Rwy 4 NA at night. If local altimeter setting not received, use McComb altimeter setting and increase all MDAs 80 feet.

MISSED APPROACH: Climb to 1500 then climbing right turn to 3000 via MCB R-334 to LINKO/14 DME and hold.

AWOS-3 118.125	HOUSTON CENTER 126.8 327.8	UNICOM 122.8 (CTAF) 0
--------------------------	--------------------------------------	--



CATEGORY	A	B	C	D
CIRCLING	1000-1 511 (600-1)	1080-1 591 (600-1)	1080-1½ 591 (600-1½)	NA

BROOKHAVEN, MISSISSIPPI
Amdt 9 09183

31°36'N - 90°25'W

BROOKHAVEN-LINCOLN COUNTY (1R7)
VOR/DME-A

SC-4, 22 OCT 2009 to 19 NOV 2009

SC-4, 22 OCT 2009 to 19 NOV 2009