

# VOR/DME RWY 13

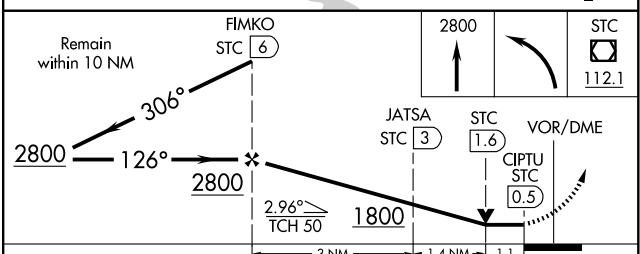
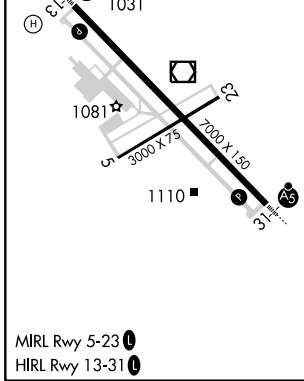
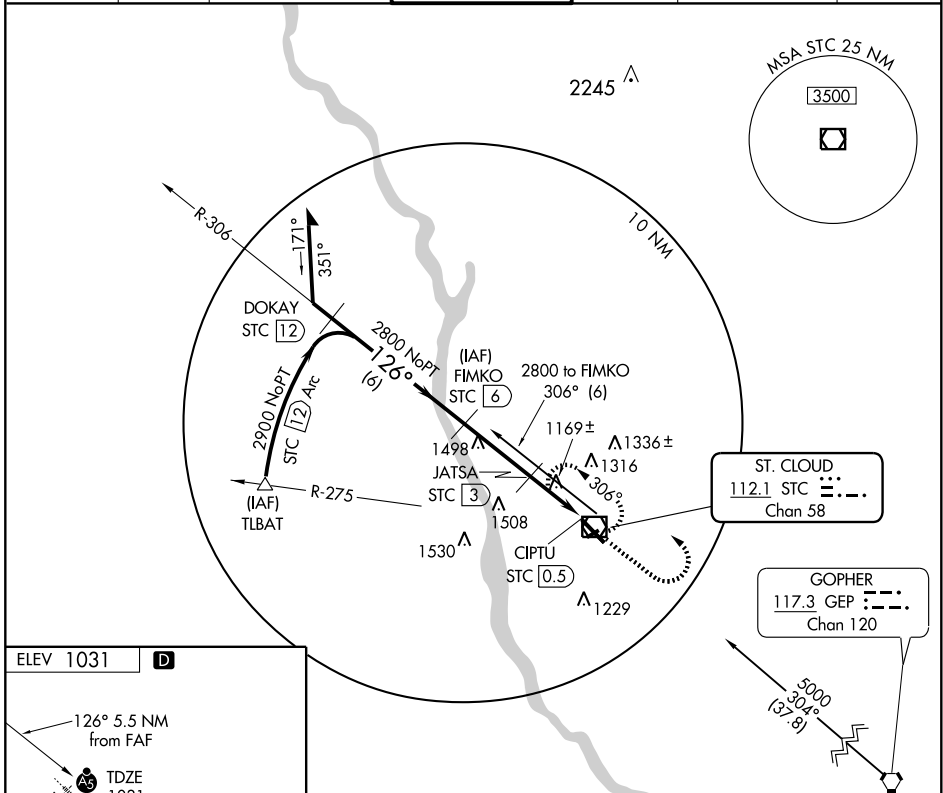
ST. CLOUD RGNL (STC)

VOR/DME STC	APP CRS	Rwy Idg	7000
<b>112.1</b>	<b>126°</b>	TDZE	<b>1031</b>
Chan <b>58</b>		Apt Elev	<b>1031</b>

**▲** For inoperative MALSR, increase Cat D visibility to 1¼. When local altimeter setting not received, use Little Falls altimeter setting and increase all MDA 80 feet.

**MALSR**  
 MISSED APPROACH: Climb to 2800, then left turn direct STC VOR/DME and hold.

ATIS <b>119.375</b>	ASOS <b>112.1</b>	MINNEAPOLIS CENTER <b>121.05 397.9</b>	ST. CLOUD TOWER * <b>118.25 (CTAF) 0</b>	GND CON <b>123.75</b>	PRINCETON RADIO <b>122.5</b>	UNICOM <b>123.5</b>
------------------------	----------------------	---	---	--------------------------	---------------------------------	------------------------



CATEGORY	A	B	C	D
S-13	1440-½ 409 (500-½)		1440-¾ 409 (500-¾)	1440-1 409 (500-1)
CIRCLING	1500-1 469 (500-1)		1500-1½ 469 (500-1½)	1620-2 590 (600-2)

NC-1, 22 OCT 2009 to 19 NOV 2009

NC-1, 22 OCT 2009 to 19 NOV 2009