

# RNAV (GPS) RWY 5

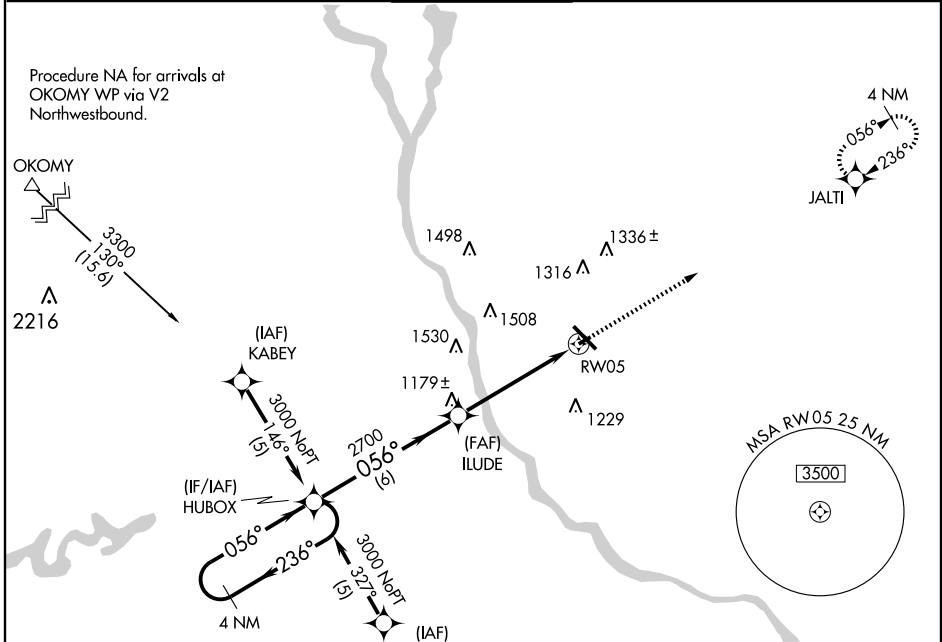
ST. CLOUD RGNL (STC)

APP CRS	Rwy Idg	<b>3000</b>
<b>056°</b>	TDZE	<b>1022</b>
	Apt Elev	<b>1031</b>

**▲** When local altimeter setting not received, use Little Falls altimeter setting and increase all MDA 80 feet and LNAV Cat C visibility ¼ mile. Visibility reduction by helicopters NA. DME/DME RNP-0.3 NA.

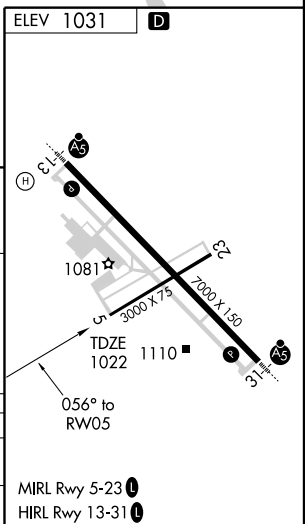
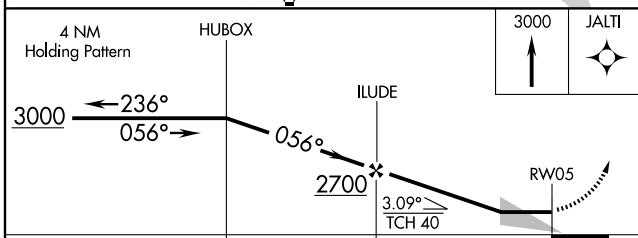
MISSED APPROACH: Climb to 3000 direct JALTI WP and hold.

ATIS	ASOS	MINNEAPOLIS CENTER	ST. CLOUD TOWER *	GND CON	PRINCETON RADIO	UNICOM
<b>119.375</b>	<b>112.1</b>	<b>121.05 397.9</b>	<b>118.25 (CTAF) 0</b>	<b>123.75</b>	<b>122.5</b>	<b>123.5</b>



Procedure NA for arrivals at OKOMY WP via V2 Northwestbound.

Procedure NA for arrivals at DWN VORTAC on airway radials 321 CW 078.



CATEGORY	A	B	C	D
LNAV MDA	1400-1 378 (400-1)			NA
CIRCLING	1500-1	469 (500-1)	1500-1½ 469 (500-1½)	NA

NC-1, 22 OCT 2009 to 19 NOV 2009

NC-1, 22 OCT 2009 to 19 NOV 2009