


RNAV (GPS) RWY 31

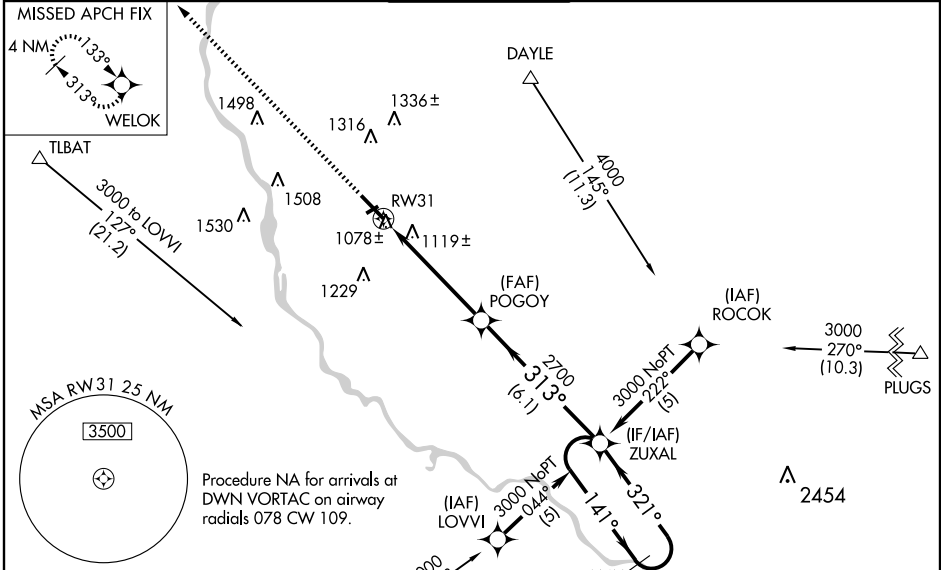
ST. CLOUD RGNL (STC)

WAAS CH 61213 W31A	APP CRS 313°	Rwy Idg TDZE Apt Elev	7000 1020 1031
----------------------------------------	------------------------	-----------------------------	-------------------------------------------

⚠ DME/DME RNP-0.3 NA. Circling to Rwy 5-23 NA at night. For uncompensated Baro-VNAV systems, LNAV/VNAV NA below -17°C (2°F) or above 46°C (114°F). When local altimeter setting not received, use Little Falls altimeter setting and increase all DA 76 feet and all MDA 80 feet. Increase LNAV/ VNAV visibility ¼ mile all Cats. For inoperative MALSR, increase LNAV Cat D visibility ¼ mile. For inoperative MALSR when using Little Falls altimeter setting, increase LPV all Cats visibility ½ mile. Baro-VNAV and VDP NA when using Little Falls altimeter setting.

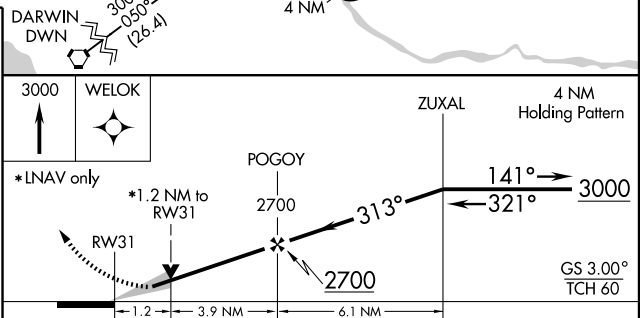
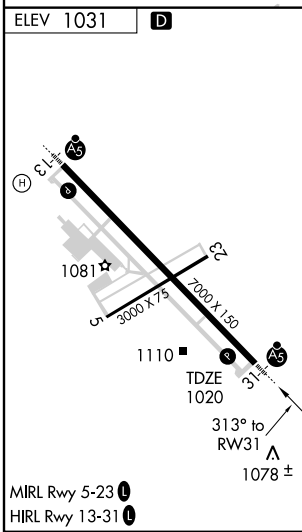
MALSR

MISSED APPROACH:
 Climb to 3000 direct WELOK and hold.

ATIS 119.375	ASOS 112.1	MINNEAPOLIS CENTER 121.05 397.9	ST. CLOUD TOWER * 118.25 (CTAF) 0	GND CON 123.75	PRINCETON RADIO 122.5	UNICOM 123.5
------------------------	----------------------	-------------------------------------------	---------------------------------------------	--------------------------	---------------------------------	------------------------



NC-1, 22 OCT 2009 to 19 NOV 2009

NC-1, 22 OCT 2009 to 19 NOV 2009



CATEGORY	A	B	C	D
LPV DA		1220-½	200 (200-½)	
LNAV/VNAV DA		1379-¾	359 (400-¾)	
LNAV MDA	1440-½	420 (500-½)	1440-¾ 420 (500-¾)	1440-1 420 (500-1)
CIRCLING	1500-1	469 (500-1)	1500-½ 469 (500-½)	1620-2 589 (600-2)