

# RNAV (GPS) RWY 23

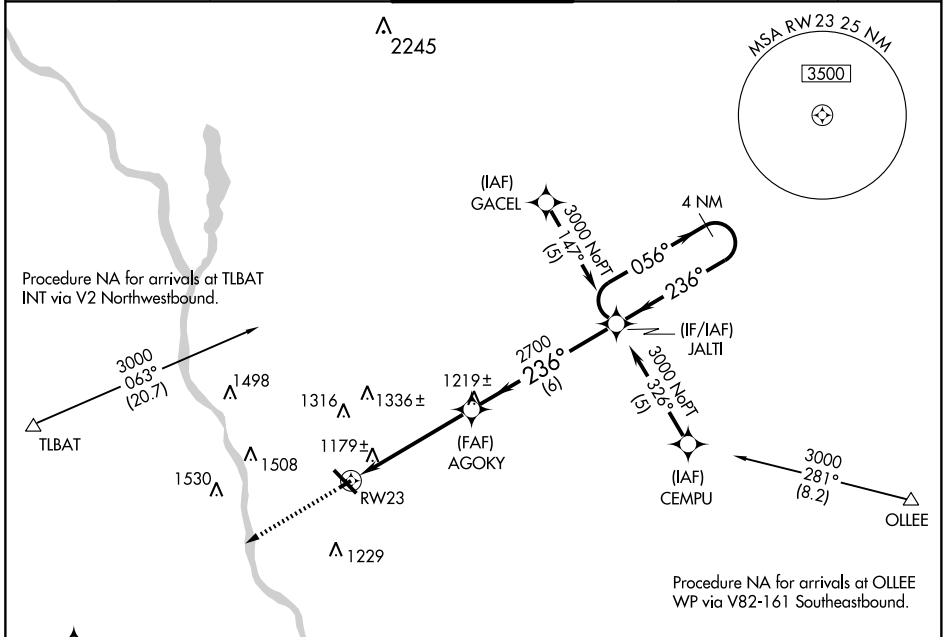
ST. CLOUD RGNL (STC)

APP CRS <b>236°</b>	Rwy Idg <b>3000</b>
	TDZE <b>1022</b>
	Apt Elev <b>1031</b>

**⚠** When local altimeter setting not received, use Little Falls altimeter setting and increase all MDA 80 feet and LNAV Cat C visibility ¼ mile. Visibility reduction by helicopters NA. DME/DME RNP-0.3 NA.

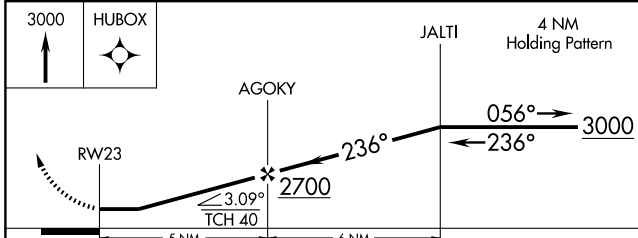
MISSED APPROACH: Climb to 3000 direct HUBOX WP and hold.

ATIS <b>119.375</b>	ASOS <b>112.1</b>	MINNEAPOLIS CENTER <b>121.05 397.9</b>	ST. CLOUD TOWER ★ <b>118.25 (CTAF) 0</b>	GND CON <b>123.75</b>	PRINCETON RADIO <b>122.5</b>	UNICOM <b>123.5</b>
------------------------	----------------------	---	---	--------------------------	---------------------------------	------------------------



NC-1, 22 OCT 2009 to 19 NOV 2009

NC-1, 22 OCT 2009 to 19 NOV 2009



CATEGORY	A	B	C	D
LNAV MDA	1440-1	418 (500-1)	1440-1½ 418 (500-1¼)	NA
CIRCLING	1500-1	469 (500-1)	1500-1½ 469 (500-1½)	NA

