

RNAV (GPS) RWY 13

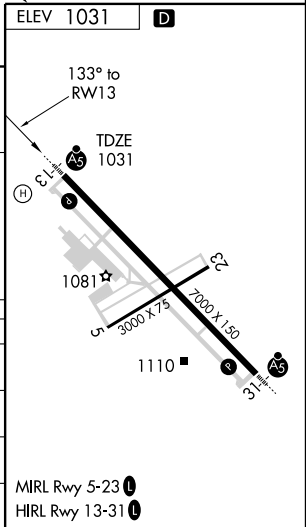
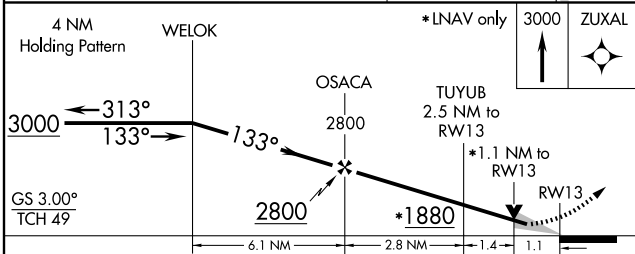
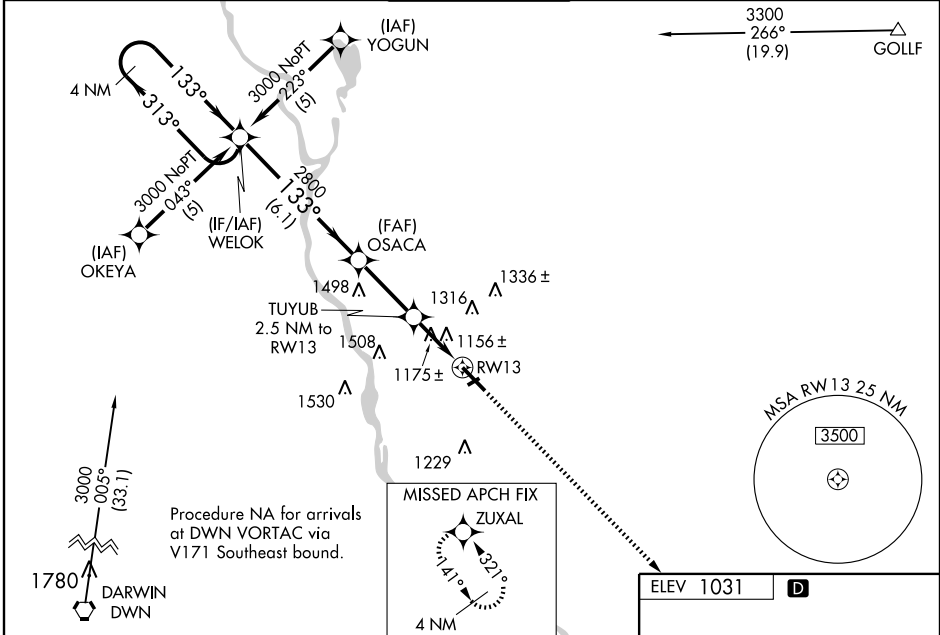
ST. CLOUD RGNL (STC)

WAAS CH 82013 W13A	APP CRS 133°	Rwy Idg TDZE 1031 Apt Elev 1031	7000
--	------------------------	---	-------------

⚠ For uncompensated Baro-VNAV systems, LNAV/VNAV NA below -17°C (2°F) or above 47°C (116°F). DME/DME RNP-0.3 NA. VDP and Baro-VNAV NA when using Little Falls altimeter setting. When local altimeter setting not received, use Little Falls altimeter setting and increase all DA 76 feet and all MDA 80 feet. Increase LNAV/VNAV visibility ¼ mile all Cats. Circling to Rwy 5-23 NA at night. For inoperative MALS, increase LNAV Cat D visibility ¼ mile. For inoperative MALS when using Little Falls altimeter setting, increase LPV all Cats visibility ½ mile.

MALS
MISSED APPROACH:
Climb to 3000 direct ZUXAL and hold.

ATIS 119.375	ASOS 112.1	MINNEAPOLIS CENTER 121.05 397.9	ST. CLOUD TOWER * 118.25 (CTAF) 0	GND CON 123.75	PRINCETON RADIO 122.5	UNICOM 123.5
------------------------	----------------------	---	---	--------------------------	---------------------------------	------------------------



CATEGORY	A	B	C	D
LPV DA		1231-½	200 (200-½)	
LNAV/VNAV DA		1455-1	424 (500-1)	
LNAV MDA	1440-½	409 (500-½)	1440-¾ 409 (500-¾)	1440-1 409 (500-1)
CIRCLING	1500-1	469 (500-1)	1500-1½ 469 (500-1½)	1620-2 589 (600-2)

NC-1, 22 OCT 2009 to 19 NOV 2009

NC-1, 22 OCT 2009 to 19 NOV 2009