

ILS or LOC RWY 31

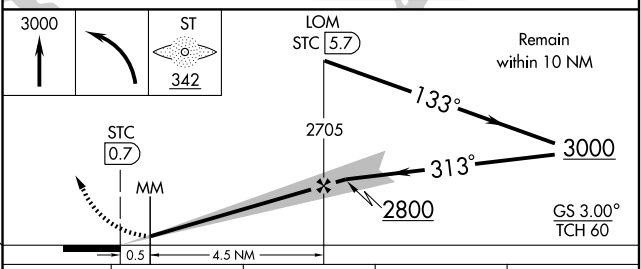
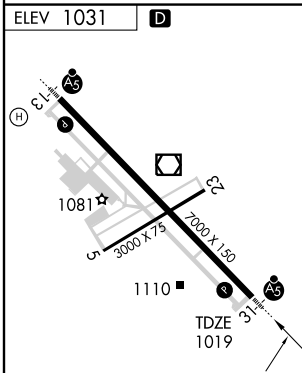
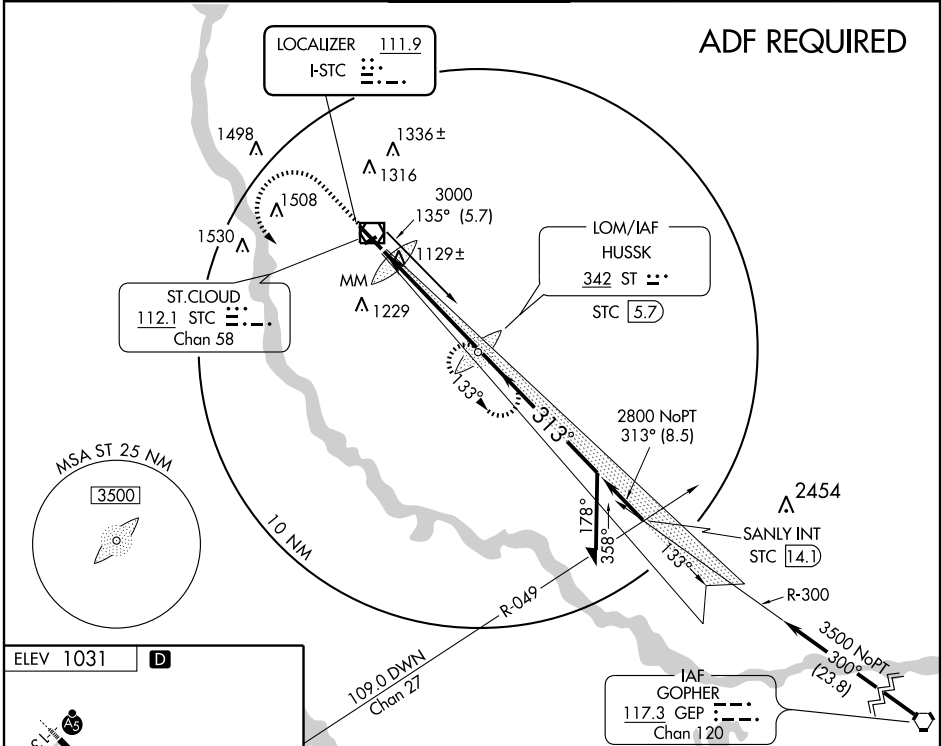
ST. CLOUD RGNL (STC)

LOC I- STC 111.9	APP CRS 313°	Rwy Idg 7000	TDZE 1019
		Apt Elev 1031	

NA When local altimeter setting not received, use Little Falls altimeter setting and increase all DA 76 feet and all MDA 80 feet.

MALSR
MISSED APPROACH: Climb to 3000, then left turn direct HUSSK LOM and hold.

ATIS 119.375	ASOS 112.1	MINNEAPOLIS CENTER 121.05 397.9	ST. CLOUD TOWER * 118.25 (CTAF)	GND CON 123.75	PRINCETON RADIO 122.5	UNICOM 123.5
------------------------	----------------------	---	---	--------------------------	---------------------------------	------------------------



CATEGORY	A	B	C	D
S-ILS 31	1219-½		200 (200-½)	
S-LOC 31	1380-½ 361 (400-½)		1380-¾ 361 (400-¾)	
CIRCLING	1500-1 469 (500-1)		1500-1½ 1620-2 469 (500-1½) 590 (600-2)	

NC-1, 22 OCT 2009 to 19 NOV 2009

NC-1, 22 OCT 2009 to 19 NOV 2009