

WAAS CH 81829	APP CRS W32A	Rwy ldg TDZE Apt Elev	5700 177 187
-------------------------	------------------------	-----------------------------	---

RNAV (GPS) RWY 32

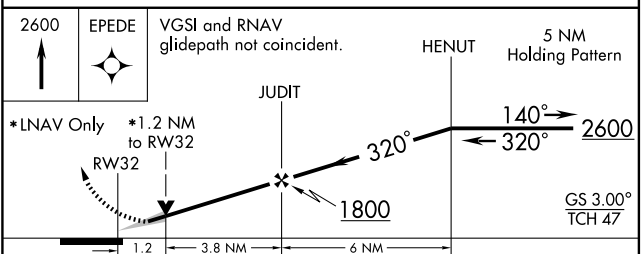
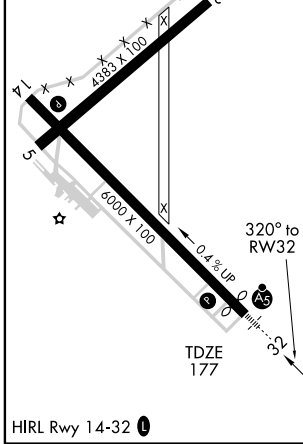
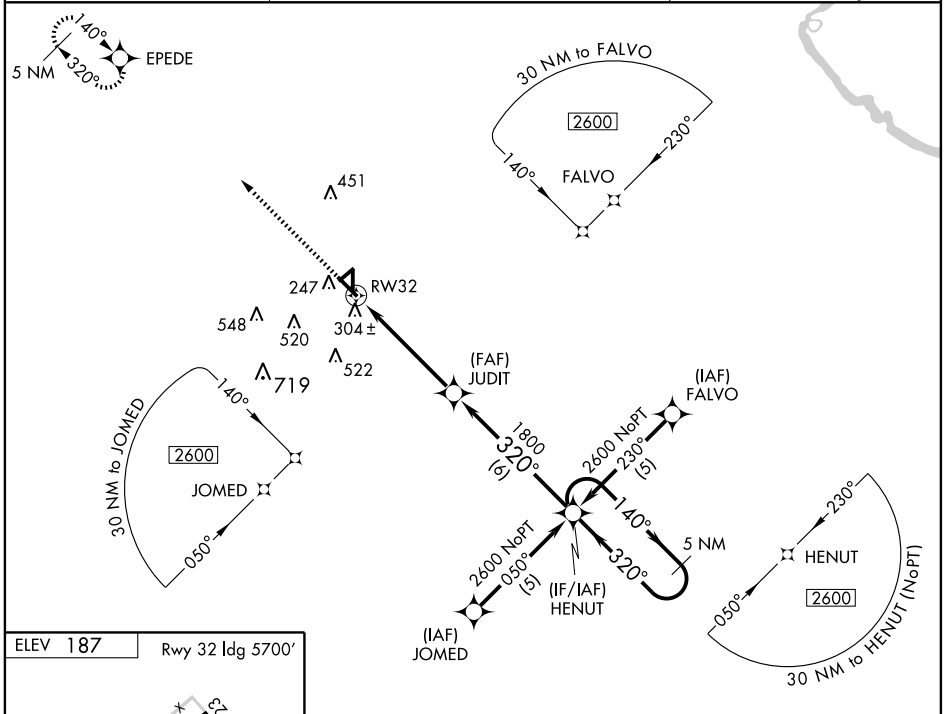
STATESBORO-BULLOCH COUNTY (TBR)

Baro-VNAV NA below -15°C (5°F). DME/DME RNP-0.3 NA.

▲ MISSED APPROACH: Climb to 2600 direct EPEDE and hold.

MALSRL

AWOS-3 119.025	SAVANNAH APP CON* 118.4 354.0	UNICOM 122.8 (CTAF)
--------------------------	---	-------------------------------



CATEGORY	A	B	C	D
LPV DA		427-1/2	250 (300-1/2)	
LNNAV/VNAV DA		645-1/4	468 (500-1/4)	
LNNAV MDA		560-1/2	383 (400-1/2)	560-1 383 (400-1)
CIRCLING	640-1/4	453 (500-1/4)	840-1/4 653 (700-1/4)	880-1/4 693 (700-2/4)

SE-4, 22 OCT 2009 to 19 NOV 2009

SE-4, 22 OCT 2009 to 19 NOV 2009