

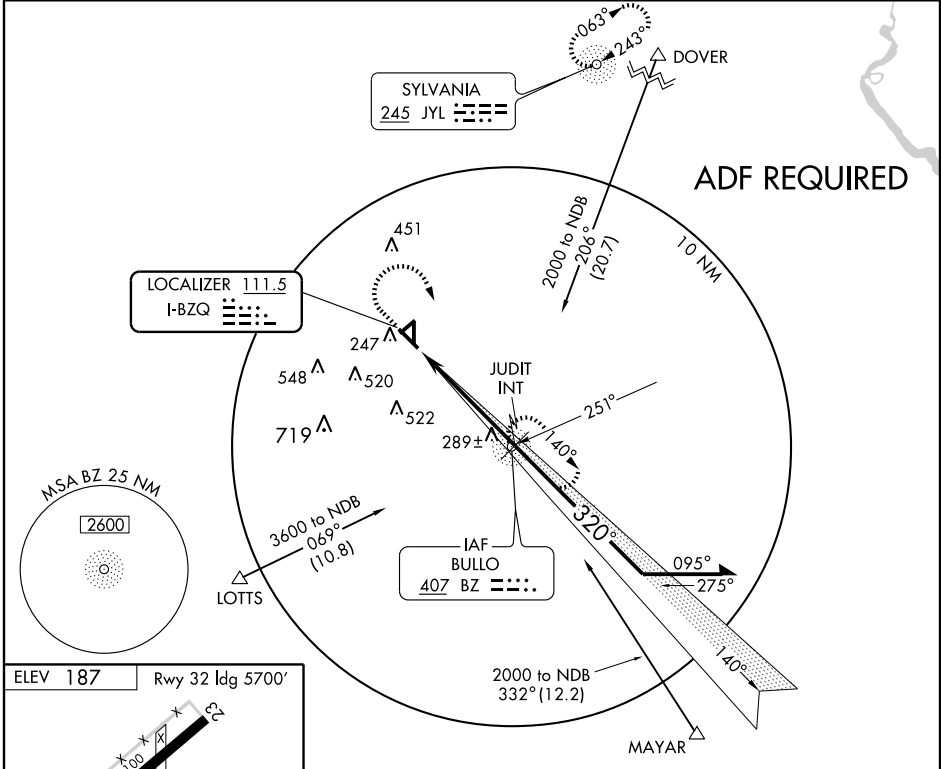
**ILS or LOC RWY 32**  
STATESBORO-BULLOCH COUNTY (TBR)

LOC I-BZQ <b>111.5</b>	APP CRS <b>320°</b>	Rwy ldg <b>5700'</b>
	TDZE <b>177</b>	
	Apt Elev <b>187</b>	

**ADF REQUIRED.**  
**NA** If local altimeter setting not received, use Savannah/Hilton Head International altimeter setting and increase all MDAs/DAs 100 feet.

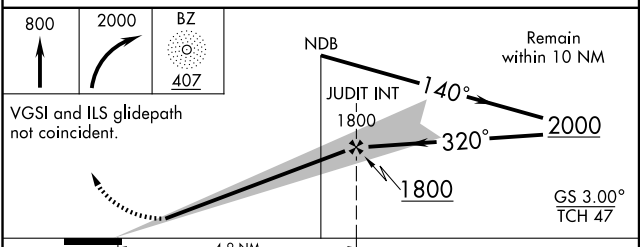
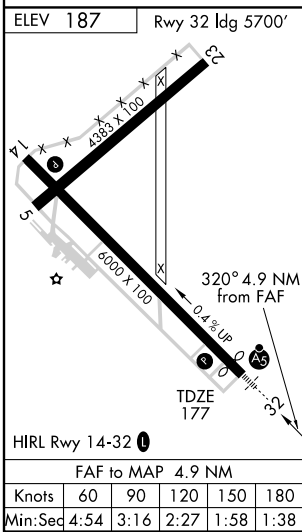
**MALSR** MISSED APPROACH: Climb to 800 then climbing right turn to 2000 direct BULLO NDB and hold.

AWOS-3 <b>119.025</b>	SAVANNAH APP CON* <b>118.4 354.0</b>	UNICOM <b>122.8 (CTAF)</b>
--------------------------	---	-------------------------------



SE-4, 22 OCT 2009 to 19 NOV 2009

SE-4, 22 OCT 2009 to 19 NOV 2009



CATEGORY	A	B	C	D
S-ILS 32	377-1/2 200 (200-1/2)			
S-LOC 32	540-1/2 363 (400-1/2)		540-3/4 363 (400-3/4)	
CIRCLING	640-1 453 (500-1)		840-1 3/4 880-2 1/4 653 (700-1 3/4) 693 (700-2 1/4)	