

NAPPANEE, INDIANA

AL-5794 (FAA)

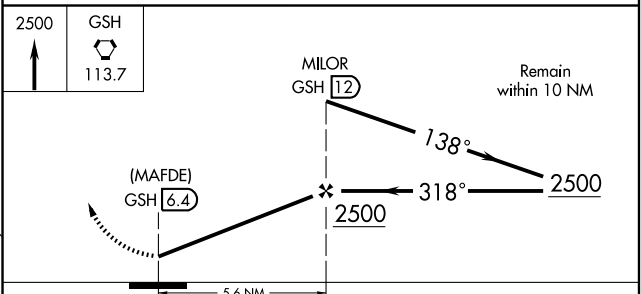
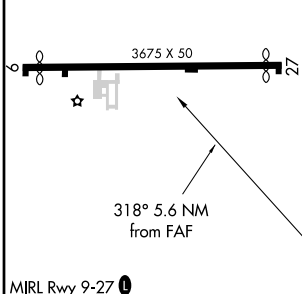
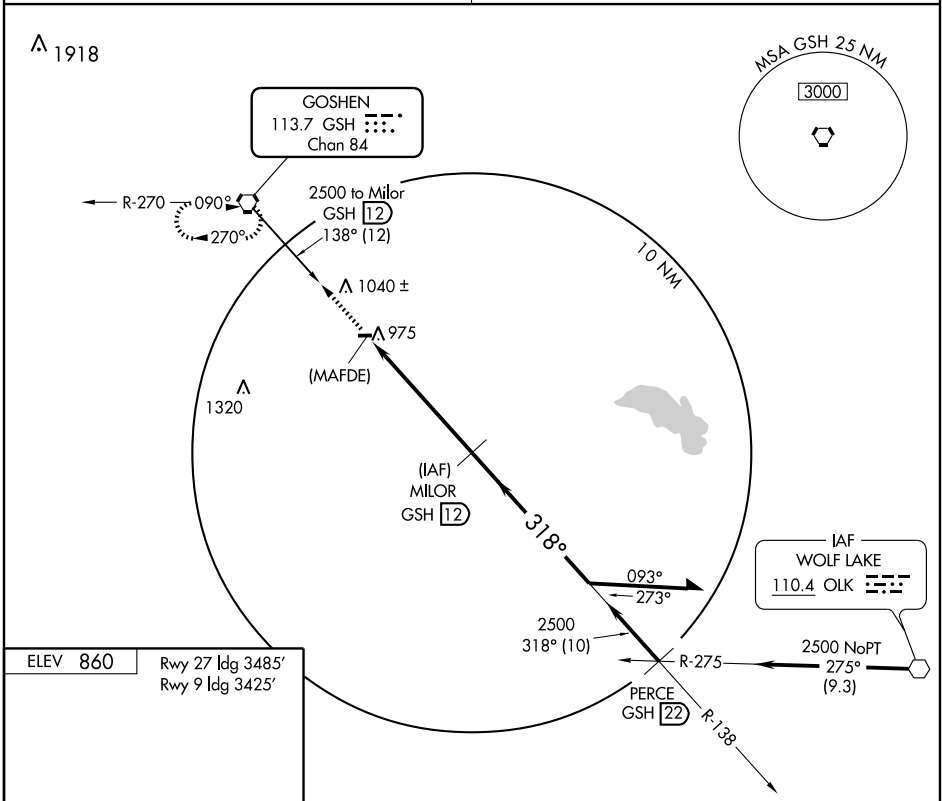
VORTAC GSH 113.7 Chan 84	APP CRS 318°	Rwy Idg TDZE Apt Elev	N/A N/A 860
--	------------------------	-----------------------------	--

VOR/DME or GPS-A

NAPPANEE MUNI (C03)

▼ Use South Bend altimeter setting.
▲ NA MISSED APPROACH: Climb to 2500 direct GSH VORTAC and hold.

SOUTH BEND APP CON * **132.05 257.8** UNICOM **122.8** (CTAF)



CATEGORY	A	B	C	D
CIRCLING	1400-1 540 (600-1)	1420-1 560 (600-1)	NA	

NAPPANEE, INDIANA
Amdt 3A 03079

41°27'N-85°56'W

VOR/DME or GPS-A

NAPPANEE MUNI (C03)

EC-2, 22 OCT 2009 to 19 NOV 2009

EC-2, 22 OCT 2009 to 19 NOV 2009