

ORLANDO, FLORIDA

AL-5793 (FAA)

WAAS CH <b>42900</b> <b>W33A</b>	APP CRS <b>333°</b>	Rwy Idg TDZE Apt Elev	<b>6000</b> <b>82</b> <b>82</b>
--	------------------------	-----------------------------	---------------------------------------

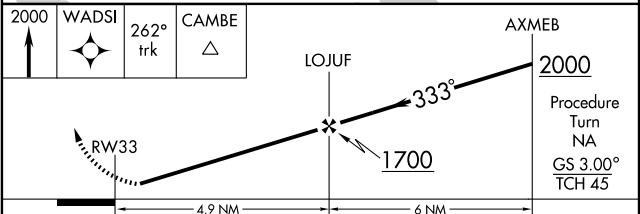
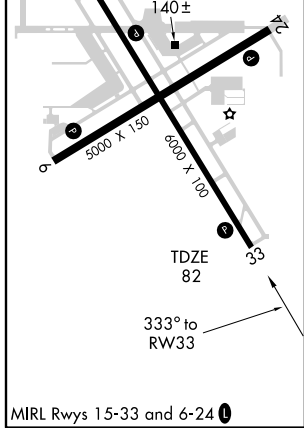
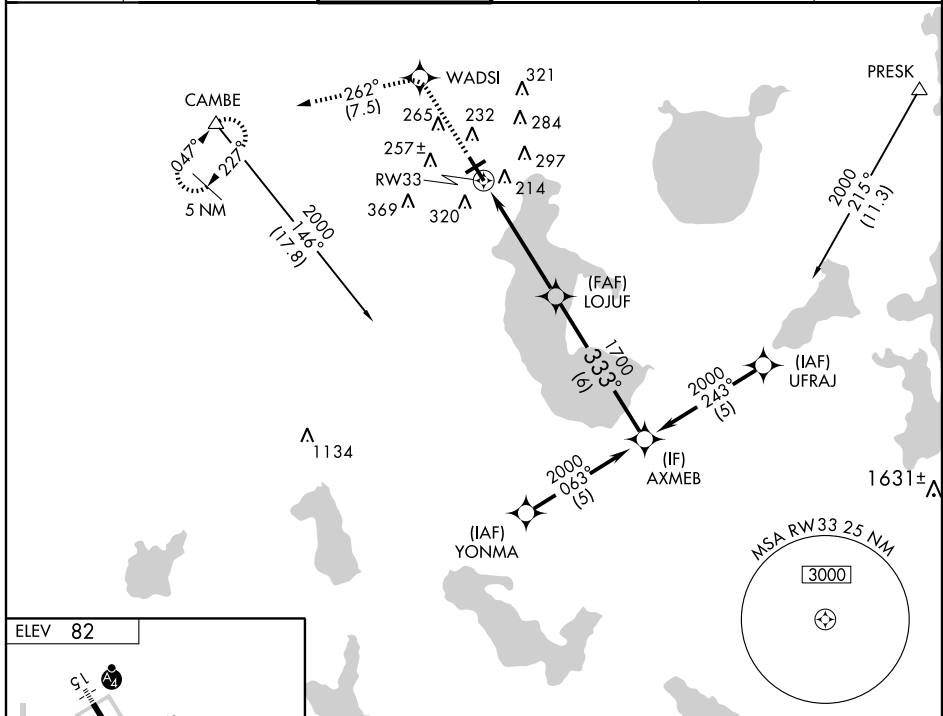
# RNAV (GPS) RWY 33

ORLANDO/KISSIMMEE GATEWAY (ISM)

**NA** If local altimeter setting not received, use Orlando Intl altimeter setting and increase all DAs 27 feet and all MDAs 40 feet. For uncompensated Baro-VNAV systems, LNAV/VNAV NA below -15°C (5°F) or above 48°C (119°F). Baro-VNAV NA when using Orlando Intl altimeter setting. DME/DME RNP-0.3 NA

MISSED APPROACH: Climb to 2000 direct WADSI and via 262° track to CAMBE and hold.

AWOS-3 <b>128.775</b>	ORLANDO APP CON <b>119.4 351.9</b>	KISSIMMEE TOWER* <b>124.45 (CTAF)</b> <b>0</b>	CLNC DEL <b>121.7 119.95*</b> *when twr closed	GND CON <b>121.7</b>	UNICOM <b>122.95</b>
--------------------------	---------------------------------------	---	--	-------------------------	-------------------------



CATEGORY	A	B	C	D
LPV DA	348-1 266 (300-1)			
LNAV/VNAV DA	548-1¾ 466 (500-1¾)			
LNAV MDA	460-1	378 (400-1)	460-1¼ 378 (400-1¼)	
CIRCLING	620-1¾	538 (600-1¾)	640-2 558 (600-2)	

ORLANDO, FLORIDA  
Orig 09267

28° 17'N-81° 26'W

# RNAV (GPS) RWY 33

SE-3, 22 OCT 2009 to 19 NOV 2009

SE-3, 22 OCT 2009 to 19 NOV 2009