

ORLANDO, FLORIDA

AL-5793 (FAA)

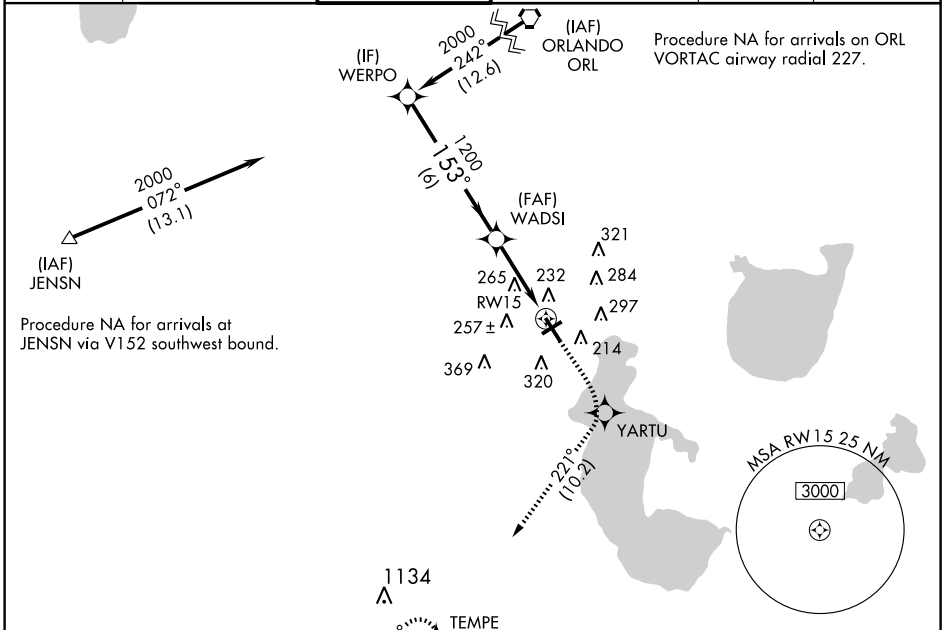
WAAS CH 45507 W15A	APP CRS 153°	Rwy Idg 6000 TDZE 82 Apt Elev 82
--	------------------------	---

RNAV (GPS) RWY 15

ORLANDO/KISSIMMEE GATEWAY (ISM)

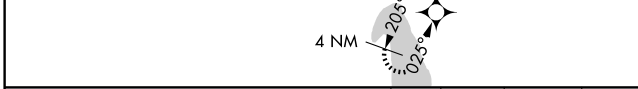
<p>NA</p> <p>DME/DME RNP-0.3 NA. Baro-VNAV NA below -15°C (5°F). If local altimeter setting not received, use Orlando Intl altimeter setting and increase all DAs/MDAs 40 feet. VDP and Baro-VNAV NA when using Orlando Intl altimeter setting.</p>	<p>MALSF</p> <p>MISSED APPROACH: Climb to 2200 direct YARTU, then right turn via 221° track to TEMPE and hold.</p>
--	--

AWOS-3 128.775	ORLANDO APP CON 119.4 351.9	KISSIMMEE TOWER* 124.45 (CTAF)	CLNC DEL 121.7 119.95* *when twr closed	GND CON 121.7	UNICOM 122.95
--------------------------	---------------------------------------	--	--	-------------------------	-------------------------

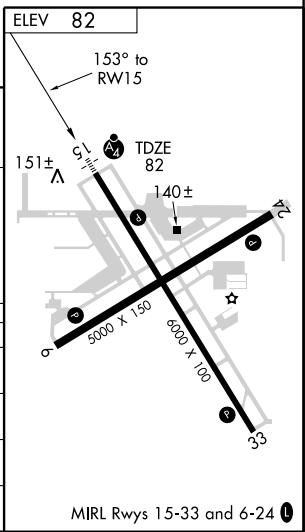


SE-3, 22 OCT 2009 to 19 NOV 2009

SE-3, 22 OCT 2009 to 19 NOV 2009



WERPO	2200	YARTU	TEMPE
Procedure Turn NA		* 1.2 NM to RW15	* LNAV only
GS 3.00°			
TCH 51			
	6 NM	2.1 NM	1.2 NM



CATEGORY	A	B	C	D
LPV DA	370-1 288 (300-1)			
LNAV/VNAV DA	560-1¾ 478 (500-1¾)			
LNAV MDA	520-1 438 (500-1)	520-1¼ 438 (500-1¼)		520-1½ 438 (500-1½)
CIRCLING	680-1¾ 598 (600-1¾)		680-2 598 (600-2)	

ORLANDO, FLORIDA
Orig 09267

28° 17'N-81° 26'W

ORLANDO/KISSIMMEE GATEWAY (ISM) RNAV (GPS) RWY 15

MIRL Rwy 15-33 and 6-24