

NDB RWY 15

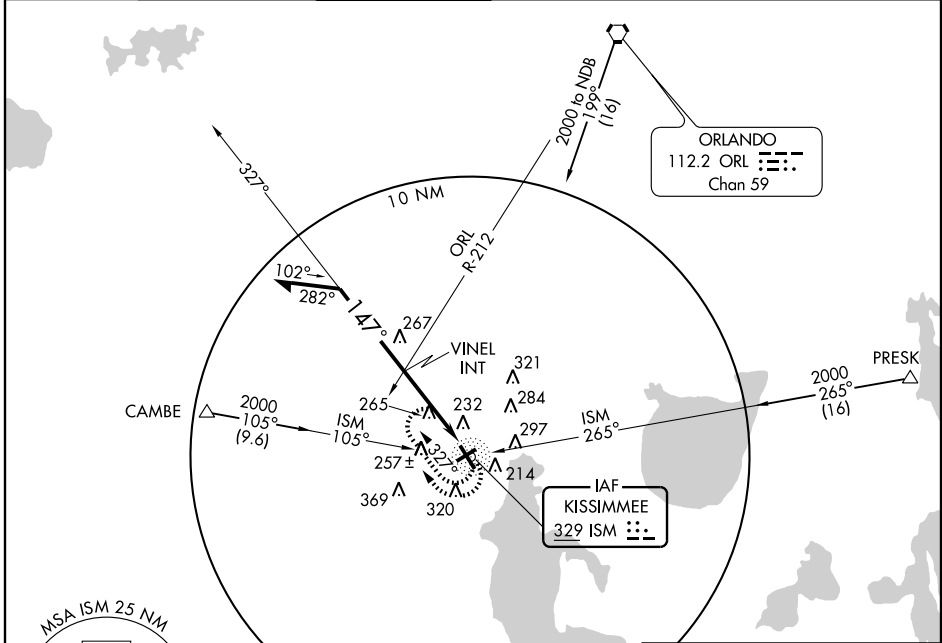
ORLANDO/ KISSIMMEE GATEWAY (ISM)

NDB ISM 329	APP CRS 147°	Rwy Idg TDZE Apt Elev	6000 82 82
-----------------------	------------------------	-----------------------------	---------------------------------------

NA Inoperative table does not apply to S-15 Cat C.
If local altimeter setting not received, use Orlando Intl altimeter setting and increase all MDAs 40 feet.

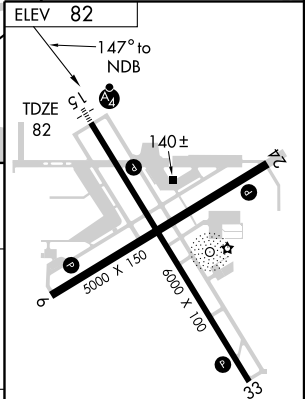
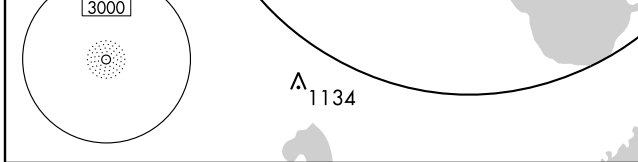
MALSF MISSED APPROACH: Climbing right turn to 1800 in ISM NDB holding pattern.

AWOS-3 128.775	ORLANDO APP CON 119.4 351.9	KISSIMMEE TOWER* 124.45 (CTAF)	CLNC DEL 121.7 119.95* *when twr closed	GND CON 121.7	UNICOM 122.95
--------------------------	---------------------------------------	--	--	-------------------------	-------------------------



SE-3, 22 OCT 2009 to 19 NOV 2009

SE-3, 22 OCT 2009 to 19 NOV 2009



CATEGORY	A	B	C	D
	S-15	580-3/4 498 (500-3/4)	580-1 1/4 498 (500-1 1/4)	580-1 1/2 498 (500-1 1/2)
CIRCLING	680-1 598 (600-1)		680-1 1/2 598 (600-1 1/2)	680-2 598 (600-2)

MIRL Rwy's 15-33 and 6-24