

ORLANDO, FLORIDA

AL-5793 (FAA)

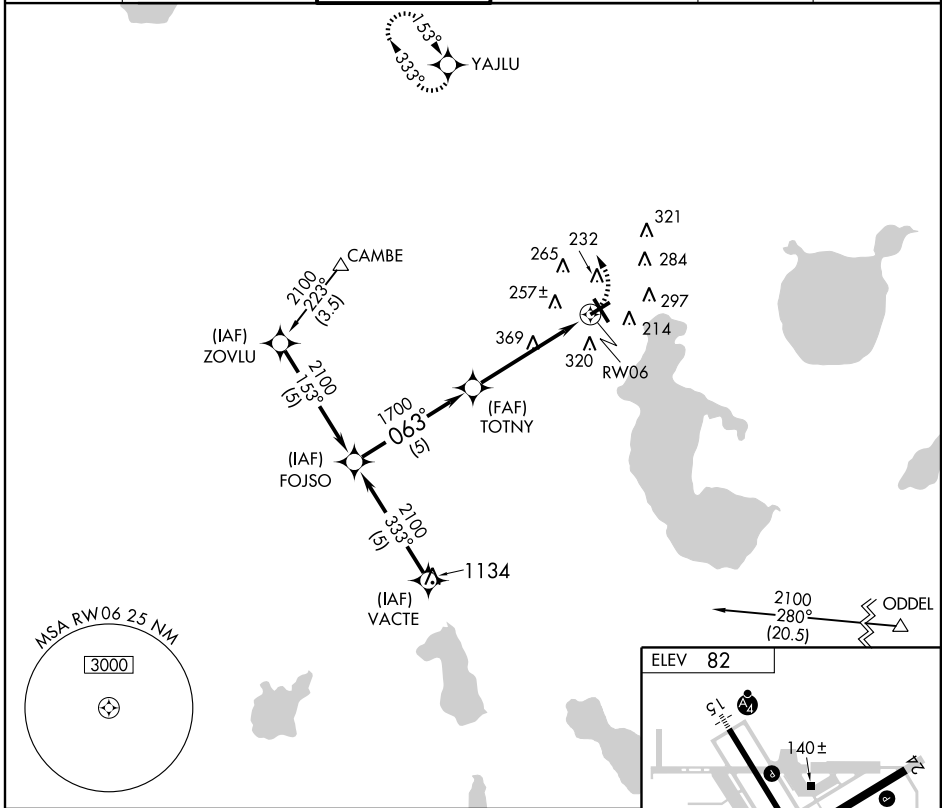
GPS RWY 6

ORLANDO/KISSIMMEE GATEWAY (ISM)

APP CRS	Rwy Idg	5000
063°	TDZE	82
	Apt Elev	82

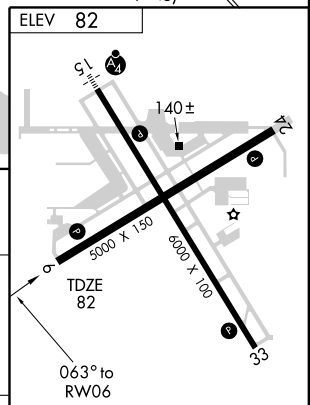
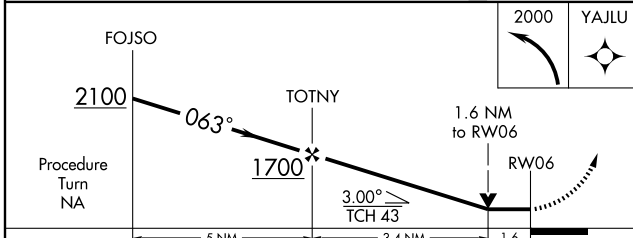
NA NA	MISSED APPROACH: Climbing left turn to 2000 direct YAJLU WP and hold.			
----------	---	--	--	--

AWOS-3 128.775	ORLANDO APP CON 119.4 351.9	KISSIMMEE TOWER* 124.45 (CTAF) 0	CLNC DEL 121.7 119.95* *when twr closed	GND CON 121.7	UNICOM 122.95
--------------------------	---------------------------------------	--	--	-------------------------	-------------------------



SE-3, 22 OCT 2009 to 19 NOV 2009

SE-3, 22 OCT 2009 to 19 NOV 2009



CATEGORY	A	B	C	D
S-6	620-1 538 (600-1)	620-1½ 538 (600-1½)	620-1¾ 538 (600-1¾)	620-2 538 (600-2)
CIRCLING	680-1 598 (600-1)	680-1½ 598 (600-1½)	680-2 598 (600-2)	

MIRL Rwy 15-33 and 6-24

ORLANDO, FLORIDA
Orig-B 09267

28° 17' N - 81° 26' W

ORLANDO/KISSIMMEE GATEWAY (ISM)

GPS RWY 6