

# RNAV (GPS) RWY 14

DALTON MUNI (DNN)

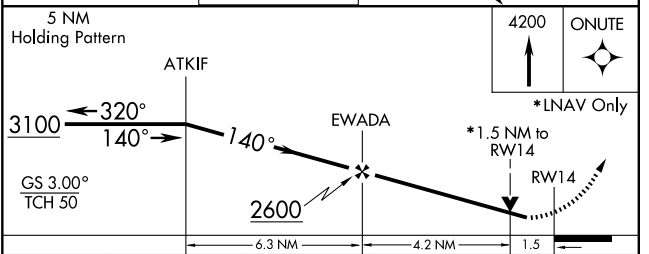
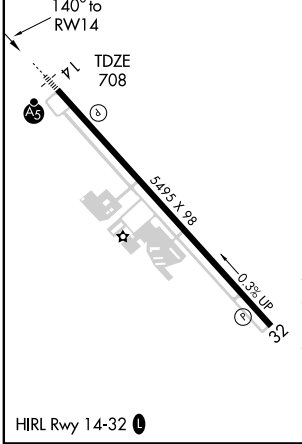
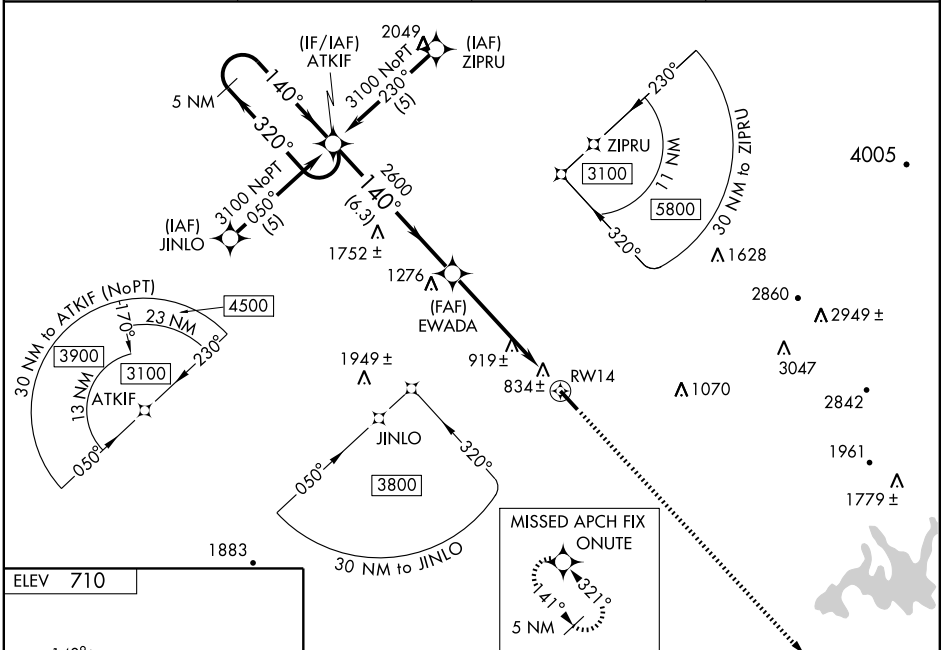
WAAS CH <b>65801</b> <b>W14A</b>	APP CRS <b>140°</b>	Rwy Idg <b>5495</b>
		TDZE <b>708</b>
		Apt Elev <b>710</b>

⚠ For uncompensated Baro-VNAV systems, LNAV/VNAV NA below -1.6°C (4°F) or above 47°C (116°F). DME/DME RNP-0.3 NA. Visibility reduction by helicopters NA. VDP and Baro-VNAV NA when using Lovell Field, Chattanooga, TN altimeter setting. For inoperative MALSRS, increase LPV all Cats. visibility to 1¼, LNAV Cats. A/B visibility to 1. When local altimeter setting not received, use Lovell Field, Chattanooga, TN altimeter setting and increase all DA 62 feet and all MDA 80 feet, increase visibility LPV all Cats., LNAV/VNAV all Cats., LNAV Cats. C/D and Circling Cat. C ¼ mile. For inoperative MALSRS when using Lovell Field, Chattanooga, TN altimeter setting; increase LPV all Cats. visibility ½ mile and LNAV Cats. A/B visibility ¼ mile.

MALSRS

MISSED APPROACH:  
Climb to 4200 direct ONUTE and hold.

AWOS-3 <b>127.65</b>	CHATTANOOGA APP CON <b>125.1 379.1</b>	CLNC DEL <b>120.25</b>	UNICOM <b>122.975 (CTAF)</b>
-------------------------	---	---------------------------	---------------------------------



CATEGORY	A	B	C	D
LPV DA	1100-¾ 392 (400-¾)			
LNAV/VNAV DA	1137-1 429 (500-1)			
LNAV MDA	1240-¾	532 (600-¾)	1240-1 532 (600-1)	1240-1¼ 532 (600-1¼)
CIRCLING	1240-1	530 (600-1)	1240-1½ 530 (600-1½)	1260-2 550 (600-2)

SE-4, 22 OCT 2009 to 19 NOV 2009

SE-4, 22 OCT 2009 to 19 NOV 2009