

# ILS or LOC RWY 14

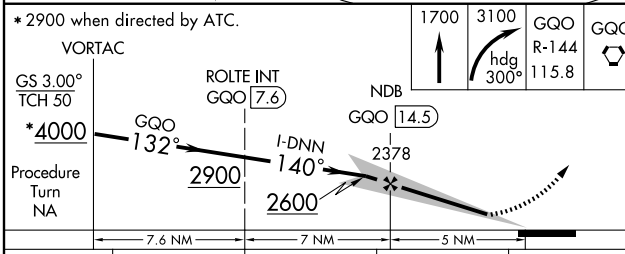
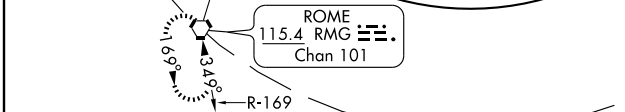
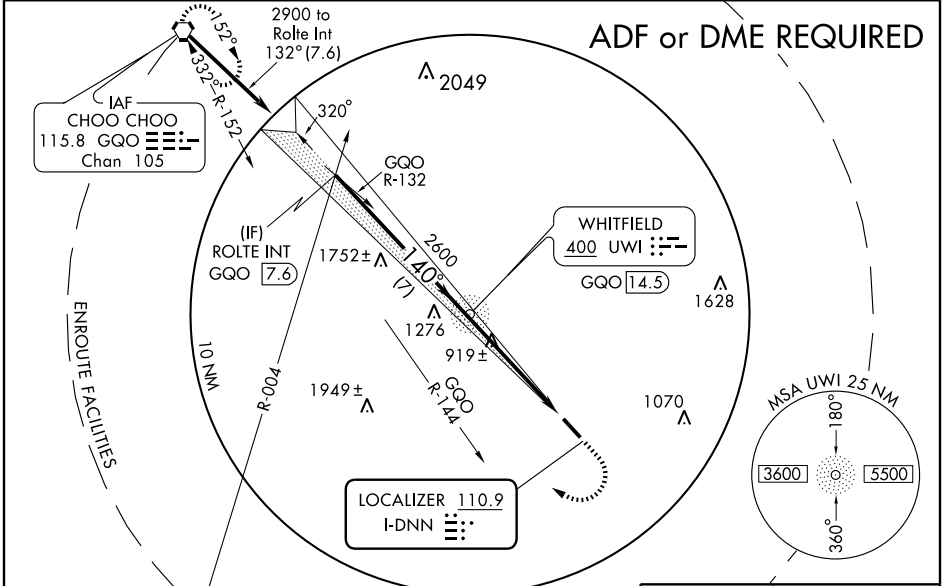
DALTON MUNI (DNN)

LOC I-DNN <b>110.9</b>	APP CRS <b>140°</b>	Rwy Idg <b>5495</b>
		TDZE <b>708</b>
		Apt Elev <b>710</b>

When local altimeter setting not received, use Lovell Field, Chattanooga, TN altimeter setting and increase all DA 62 feet and all MDA 80 feet and S-LOC 14 Cats. C/D and Circling Cat. C visibilities ½ mile. Inoperative table does not apply to S-ILS 14. For inoperative MALSR when using Lovell Field, Chattanooga, TN altimeter setting; increase S-LOC 14 Cats. A/B ½ mile. Visibility reduction by helicopters NA. For inoperative MALSR, increase S-LOC 14 Cats. A/B visibility to 1 mile.

**MALSR**  
MISSED APPROACH: Climb to 1700 then climbing right turn to 3100 via heading 300° and GQO R-144 to GQO VORTAC and hold.

AWOS-3 <b>127.65</b>	CHATTANOOGA APP CON <b>125.1 379.1</b>	CLNC DEL <b>120.25</b>	UNICOM <b>122.975(CTAF) 0</b>
-------------------------	---	---------------------------	----------------------------------



CATEGORY	A	B	C	D
S-ILS 14	959-¾ 251 (300-¾)			
S-LOC 14	1240-¾	532 (600-¾)	1240-1 532 (600-1)	1240-1½ 532 (600-1½)
CIRCLING	1240-1	530 (600-1)	1240-1½ 530 (600-1½)	1260-2 550 (600-2)

HIRL Rwy 14-32 0				
FAF to MAP 5 NM				
Knots	60	90	120	150
Min:Sec	5:00	3:20	2:30	2:00

SE-4, 22 OCT 2009 to 19 NOV 2009

SE-4, 22 OCT 2009 to 19 NOV 2009