

ATHENS, TENNESSEE

AL-5791 (FAA)

| | | |
|-------------|----------|-------------|
| APP CRS | Rwy Idg | 6450 |
| 202° | TDZE | 858 |
| | Apt Elev | 858 |

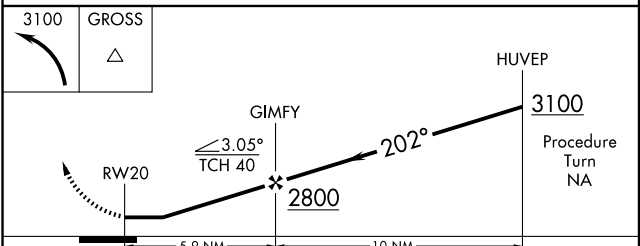
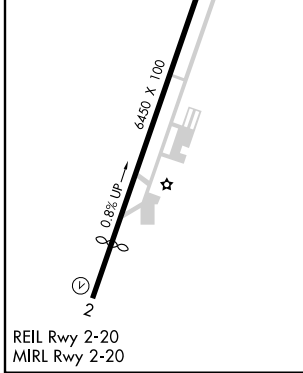
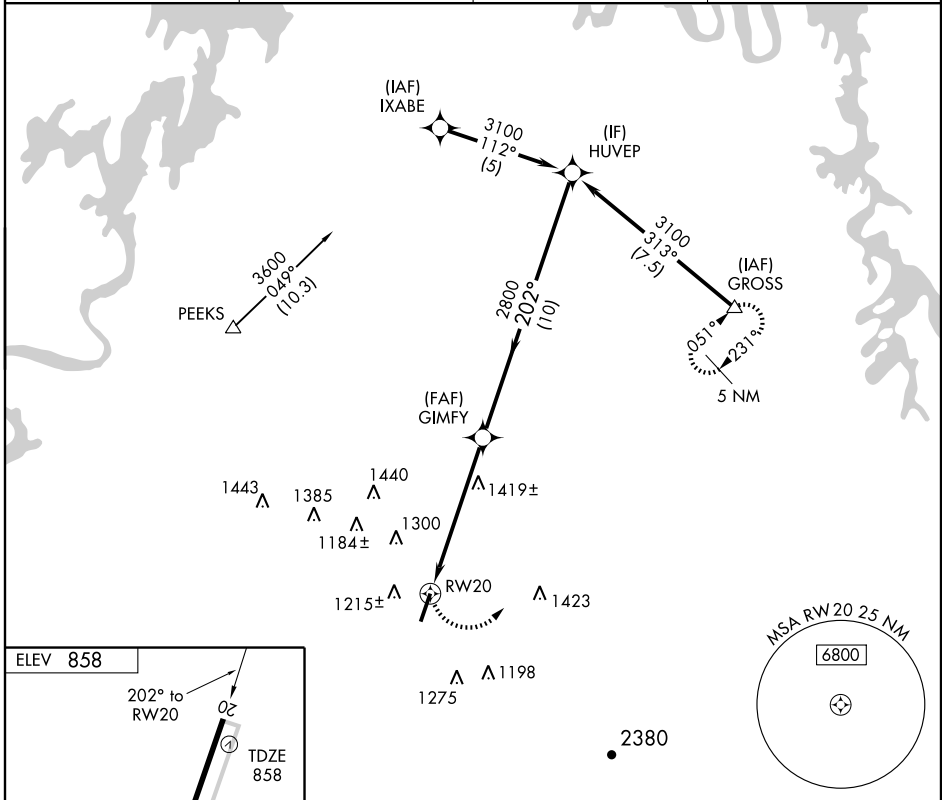
RNAV (GPS) RWY 20

ATHENS/MCMINN COUNTY (MMI)

▽ If local altimeter setting not received, use Mcghee Tyson altimeter setting and increase all MDAs 120 feet. DME/DME RNP-0.3 NA.
△ NA Visibility reduction by helicopters NA.

MISSED APPROACH: Climbing left turn to 3100 direct GROSS and hold.

| | | | |
|--------------------------|---|-----------------------|-------------------------------|
| AWOS-3 125.425 | KNOXVILLE APP CON 123.9 353.6 | GCO 121.725 | UNICOM 122.8 (CTAF) |
|--------------------------|---|-----------------------|-------------------------------|



| CATEGORY | A | B | C | D |
|----------|-----------------------|-------------------------|-------------------------|-------------------------|
| LNAV MDA | 1680-1 822 (900-1) | 1680-1¼ 822 (900-1¼) | 1680-2½ 822 (900-2½) | 1680-2¾ 822 (900-2¾) |
| CIRCLING | 1680-1 822 (900-1) | 1680-1¼ 822 (900-1¼) | 1680-2½ 822 (900-2½) | 1680-2¾ 822 (900-2¾) |

ATHENS, TENNESSEE
 Orig 09183

35° 24'N-84° 34'W

RNAV (GPS) RWY 20

SE-1, 22 OCT 2009 to 19 NOV 2009

SE-1, 22 OCT 2009 to 19 NOV 2009